

Kyrie

From the Missa Philippina

Edition: J. Kelecom

note values halved, slurs and tempo indication are editorial
plainchant from *Kyriale VIII de Angelis*

Manuel Cardoso
(1566 - 1650)

Ky-ri - e - - - le - i - son.

[♩ = 50]

2

S
Phi - lip - - - pus quar - tus. Phi - lip -

A
Ky - ri - e e - lei - - - -

T
8 Ky - ri - e e - lei - - - - son, Ky -

B
Ky - ri - e e - - -

6

S
- - pus quar - - - tus. _____

A
son, Ky - - - ri - e e - lei - - - son.

T
8 ri - e e - - - lei - - - son.

B
- - - lei - - - son.

9

Ky-ri - e - - - - - e - - - - - le - i - son.

10

S

Chris - te e - lei son, Chri - ste e - lei -

A

Chri - ste e - lei - - - - - son, e - lei -

T

Phi - lip - pus quar - tus. Phi - lip - pus quar -

B

Chri - ste e - lei - le - - - - - son, Chri - ste e -

15

S

son, e - le - i - son e - lei - son. - - - - -

A

son, Chri - ste e lei - - - - - son.

T

tus. Phi - lip - - - - - pus quar - tus.

B

lei - - - - - son, e - lei - son, - - - - - e - lei - son.

19

Chri-ste e - - - le - i-son.

20

S
Chris - te e - - - lei - - - - -

A
Chris - te e - - - lei - - - son, Chri - ste e -

T
8
Chri - ste e - - -

B
Phi - lip - - - pus quar - tus. Phi - lip - - - pus

24

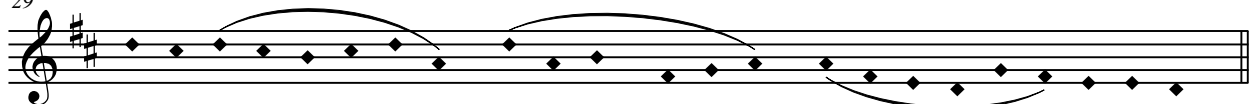
S
- - - son, Chris - te e - lei - son. _____

A
- - lei - - - - son. _____

T
8
lei - - - - son, Chri - ste e - - - lei - son.

B
quar - tus. Phi - lip - - - pus quar - tus. _____

29

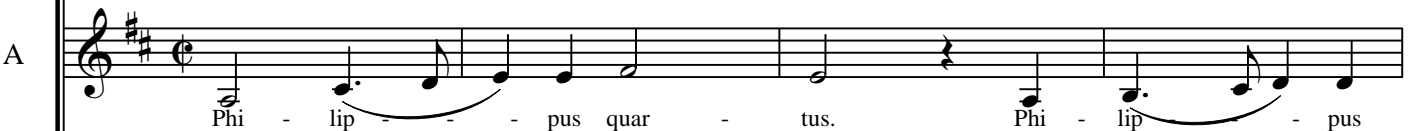


Ky - ri - e e - lei - son.

30



Ky - ri - e e - lei - son, Ky -



Phi - lip - pus quar - tus. Phi - lip - pus



Ky - ri - e e - lei - son,

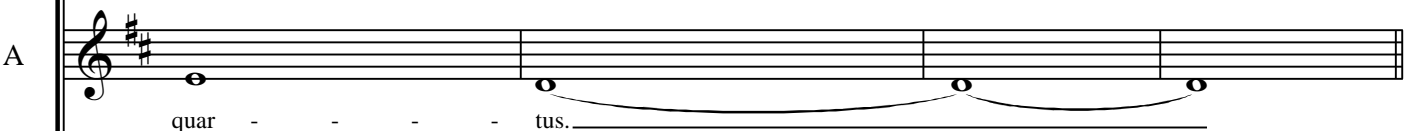


Ky - ri - e e - lei - son, Ky - ri - e

34



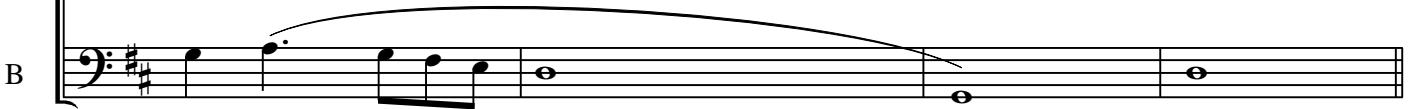
ri - e e - lei - son.



quar - tus.



Phi - lip - pus quar - tus.



e - lei - son.

38



Ky-ri-e e - lei - son.