

JOSEBA

Unaccompanied SATB

Glasgow Responses (1662)

CHRISTOPHER MARTIN HAMPSON

2006

Christopher Martin Hampson (b. 1980) is an English organist, conductor and composer. His professional highlights so far include the positions of Organ Scholar of St Edmund Hall, Oxford, Assistant Cathedral Organist of St Mary's Cathedral, Glasgow and Organist-Choirmaster of Groton School, Massachusetts, USA. Chris has appeared on BBC radio many times as either organist, accompanist, solo singer or choir member. He has completed an MMus under the supervision of John Butt with a thesis on the topic of Bach performance practice. Since 2014, Chris has lived in the Pacific North West with his wife, Sarah, and children, Anna Magdalena and Elisabeth Juliana. He remains in demand as a musician and also as a classical audio engineer. Chris is an avid reader of theology, enjoys drinking wine, and taking walks with his dog, Max.

For more information on Chris' other projects, including his recordings of the complete keyboard works of Johann Sebastian Bach, please visit TheBachProject.org.



Copyright © 2006 by Christopher Martin Hampson.

Glasgow Responses (1662) is licensed under the Creative Commons Attribution-NonCommercial-NoDerivatives 4.0 International License. To view a copy of this license, visit <http://creativecommons.org/licenses/by-nc-nd/4.0/> or send a letter to Creative Commons, PO Box 1866, Mountain View, CA 94042, USA.

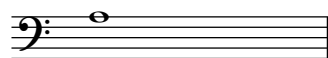
You are free to print copies, share, perform and record this music as long as you credit me as the composer. Please do not sell these editions or distribute any arrangements or derivative works. If you plan to perform this music please consider sending a quick email to let me know the date and location at chrismhampson@gmail.com. While I do not make any profit by making these works available, it is always nice to hear that they are being used.

Cover design *Pipe Blues* by Christopher Martin Hampson.

For St Mary's Cathedral, Glasgow

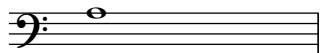
Glasgow Responses (1662)

CHRISTOPHER HAMPSON (b. 1980)



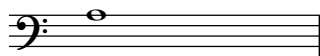
O Lord open thou our lips.

And our mouth shall shew forth thy praise.



O God, make speed to save us.

O Lord, make haste to help us.

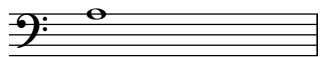


Glory be...

As it was in the be - gin - ning is now,

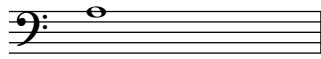
6

and e - ver shall be: world with - out end. A - men.



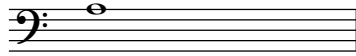
Praise ye the Lord.

The Lord's name be prais - ed.



The Lord be with you.

And with thy spir - it.



Let us pray.

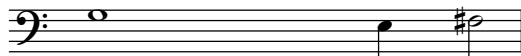
Lord, have mer - cy u - pon us.

13

Christ have mer - cy u - pon us. Lord, have mer - cy u - pon us.

15

Our Father, which art in heav'n
...from evil. Amen.



O Lord shew thy mercy u - pon us

And grant us thy sal - va - tion.



O Lord, save the queen

And mer - ci - ful - ly hear us when we call u - pon thee.

A single bass line in G major, starting with a whole note G4, followed by quarter notes A4 and B4.

Endue thy ministers with righteousness

A two-staff musical score in G major. The vocal line (treble clef) has lyrics: "And make thy cho - sen peo - ple joy - ful". The piano accompaniment (bass clef) provides harmonic support.

A single bass line in G major, starting with a whole note G4, followed by quarter notes A4 and B4.

O Lord, save thy people

A two-staff musical score in G major. The vocal line (treble clef) has lyrics: "And bless thine in - her - ri - tance.". The piano accompaniment (bass clef) provides harmonic support.

A single bass line in G major, starting with a whole note G4, followed by quarter notes A4 and B4.

Give peace in our time
O Lord

A two-staff musical score in G major. The vocal line (treble clef) has lyrics: "Because there is none other that fight - eth for us, but on - ly thou, O God.". The piano accompaniment (bass clef) features a triplet of eighth notes in the right hand and a triplet of eighth notes in the left hand.

A single bass line in G major, starting with a whole note G4, followed by quarter notes A4 and B4.

O God make clean our hearts
within us

A two-staff musical score in G major. The vocal line (treble clef) has lyrics: "And take not thy Ho - ly Spi - rit from - us.". The piano accompaniment (bass clef) provides harmonic support.

A single bass line in G major, starting with a whole note G4.

A two-staff musical score in G major. The vocal line (treble clef) has lyrics: "A - men.". The piano accompaniment (bass clef) provides harmonic support.

A two-staff musical score in G major. The vocal line (treble clef) has lyrics: "A - men.". The piano accompaniment (bass clef) provides harmonic support.

A - - - - - men.
 A - - - - - men.
 A - - - - - men.
 A - - - - - men.

Final Responses

The Lord be with you

P And with thy Spi - - rit.

f Thanks be to God.
f Thanks be to God.
f Thanks be to God.
f Thanks be to God.
f Thanks be to God.
f Thanks be to God.

Let us bless the Lord

