

# Gloria a 7 voci

Claudio Monteverdi 1567 - 1643

concertata con due violini et quattro viole da braccio  
ovvero 4 tromboni quali anco si ponno lasciare se occorre l'acidente

1  
Violino 1

1  
Violino 2

1  
Canto 1  
Glo - - - - -

1  
Canto 2  
Glo - - - - -

1  
Alto

1  
Tenore 1  
Glo-ri-a, Glo-ri-a in ex-cel-sis De - o,

1  
Tenore 2

1  
Basso 1

1  
Basso 2

1  
BC

5  
5  
5  
ri - a,  
5  
ri - a,  
5  
5  
Glo - - - - - ri - a,  
5  
Glo - - - - - ri - a,  
5  
5  
5  
5

Detailed description: This musical score consists of ten staves. The first two staves feature complex, fast-moving melodic lines in treble clef. The third staff is a vocal line with the lyrics 'ri - a,'. The fourth staff continues the vocal line with 'ri - a,'. The fifth and sixth staves are instrumental accompaniment in treble clef, with the lyrics 'Glo - - - - - ri - a,' and 'Glo - - - - - ri - a,' respectively. The seventh and eighth staves are empty bass clef staves. The ninth staff is an empty treble clef staff. The tenth staff is a bass clef staff with a simple, slow-moving melodic line.

9 *Tutti*

9 *Tutti*

9 *Tutti*

9 *Tutti*  
Glo - ri - a, Glo - ri - a in ex - cel - sis De - o,

9 *Tutti*  
Glo - ri - a, Glo - ri - a in ex - cel - sis De - o,

9 *Tutti*  
Glo - ri - a, Glo - ri - a in ex - cel - sis De - o,

9 *Tutti*  
Glo - ri - a, Glo - ri - a in ex - cel - sis De - o, Glo - - - - -

9 *Tutti*  
Glo - ri - a, Glo - ri - a in ex - cel - sis De - o,

9 *Tutti*  
Glo - ri - a, Glo - ri - a in ex - cel - sis De - o,

9 *Tutti*  
Glo - ri - a, Glo - ri - a in ex - cel - sis De - o,

9 *Tutti*

9 *Tutti*

13

13

13

13

Glo - - - - - ri - a

13

Glo - - - - - ri - a,

13

Glo - - - - - ri - a,

13

ri - a, Glo - - - - -

13

Glo - - - - - ri - a,

13

13

13

13

17 Tutti

17 Tutti

17 Tutti

Glo - - - - ri - a Glo-ri - a, Glo-ri - a in ex-cel-sis

17 Tutti

Glo - - - - ri - a Glo-ri - a, Glo-ri - a in ex-cel-sis

17 Tutti

Glo - ri - a, Glo - ri - a Glo-ri - a, Glo-ri - a in ex-cel-sis

17 Tutti

ri - a Glo-ri - a, Glo-ri - a in ex-cel-sis

17 Tutti

Glo - - - - ri - a, Glo-ri - a, Glo-ri - a in ex-cel-sis

17 Tutti

Glo-ri - a, Glo-ri - a in ex-cel-sis De - o, Glo-ri - a, Glo-ri - a in ex-cel-sis

17 Tutti

Glo-ri - a, Glo-ri - a in ex-cel-sis Tutti

17 Tutti

17 Tutti

21

21

21

21 De - o, Glo - - - - - ri - a, Glo - - - - -

21 De - o, Glo - - - - - ri - a,

21 De - o, Glo - ri - a, Glo - ri - a, Glo - ri - a, Glo - ri - a,

21 De - o, Glo - - - - - ri - a, Glo - ri - a, Glo - ri - a, Glo - ri - a,

21 De - o, Glo - ri - a, Glo - - - - - ri - a in ex - cel -

21 De - o, Glo - - - - - ri - a, Glo - - - - -

21 De - o, Glo - - - - - ri - a,

21

21

25

ri-a, Glo-ri-a, Glo-ri-a in ex-cel-sis De-o, in ex-cel-sis,

Glo - - - - - ri-a, Glo-ri-a, Glo-ri-a in ex-cel-sis De-o, in ex-cel-sis,

Glo - ri-a, Glo - ri-a, Glo-ri-a, Glo-ri-a, Glo-ri-a in ex-cel-sis De-o, in ex-cel-sis,

Glo - ri-a, Glo - ri-a, Glo-ri-a, Glo-ri-a, Glo-ri-a in ex-cel-sis De-o, in ex-cel-sis,

sis De-o, Glo - ri-a, Glo-ri-a, Glo-ri-a, Glo-ri-a in ex-cel-sis De-o, in ex-cel-sis,

ri-a, Glo-ri-a, Glo-ri-a in ex-cel-sis De-o, in ex-cel-sis,

Glo - - - - - ri-a, Glo-ri-a, Glo-ri-a in ex-cel-sis De-o, in ex-cel-sis,

25

25

29

in ex-cel-sis, in ex-cel - - - sis De - - o. Et in

in ex-cel-sis, in ex-cel - - - sis De - - o. Et in

in ex-cel-sis, in ex-cel - - - sis De - - o. Et in

in ex-cel-sis, in ex-cel - sis De - - - - o. Et in

in ex-cel-sis, in ex-cel-sis De - - - - o. Et in

in ex-cel-sis, in ex-cel - sis De - - o. Et in ter -

in ex-cel-sis, in ex-cel - sis De - - o. Et in

29

29



36

36

36

36

ter - ra pax, pax ho - mi - ni - bus bo -

36

ter - ra pax, pax ho - mi - ni - bus bo - - - nae

36

ter - ra pax, pax ho - mi - ni - bus bo - nae vo -

36

ter - ra pax, pax ho - mi - ni - bus bo - nae

36

ter - ra pax, pax ho - mi - ni - bus bo - nae vo -

36

ra pax, pax ho - mi - ni - bus bo - nae vo - - -

36

ter - ra pax, pax ho - mi - ni - bus bo - nae vo -

36

36

48

nae vo - lun - ta - - - - - tis.

vo - - - - lun - ta - - - - - tis.

lun - ta - - - - - tis.

vo - lun - ta - - - - - tis.

lun - ta - - - - - tis.

lun - ta - - - - - tis.

lun - - - - ta - - - - - tis.

55

55

55

**Cantus 1 + 2**

Lau - da - - - mus, lau - da - mus te,

55

Lau - da - - - mus, lau - da - mus te,

55

55

55

55

55

55

55

55

59

59

59

59

lau - da - - - - - mus,

59

59

lau - da - - - - - mus,

59

59

59

59

59

59

59

59

59

59

59

63

63

63

63

lau - da - mus, lau - da - mus te.

63

lau - da - mus, lau - da - mus te.

63

63

**Tenore 1 + 2**

Lau - da - mus, lau - da - mus

Lau - da - mus, lau - da - mus

63

63

63

63

67

67

67

67

67

67

67

67

67

67

67

te. Be-ne-di - - - - ci-mus, be-ne-di - ci - mus te,

67

67

67

67

67

67

67

67

67

te. Be-ne-di - - - - ci-mus, be-ne-di - ci - mus te,

67

67

67

67

67

67

67

67

67

67

71

71

71

71

71

71

71  
be - ne - di - ci - mus te. Ad - o - ra - mus te,

71  
be - ne - di - ci - mus te. Ad - o - ra - mus te,

71

71

71

71

75

75

75

75

75

75

75

ad - o - ra - mus, ad - o - ra - mus, ad - o - ra - mus te.

75

ad - o - ra - mus, ad - o - ra - mus, ad - o - ra - mus te.

75

75

75

75



79

79

79 **Cantus 1 + 2**

Ad - o - ra - mus, ad - o - ra - mus, ad - o - ra - mus te. Glo - ri - - - fi -

79

Ad - o - ra - mus, ad - o - ra - mus, ad - o - ra - mus te. Glo - ri - - - fi -

79

79

79

79

79

79

79

79

79

83

83

83

83

ca - mus, gò - ri - fi - ca - mus

83

ca - mus, gò - ri - fi - ca - mus

83

83

**Tenore 1 + 2**

Glo -

83

Glo -

83

83

83

83

90

90

90

90

90

90

90

90

ri - fi - ca - mus, gò - ri - fi - ca - mus te.

90

ri - fi - ca - mus, gò - ri - fi - ca - mus te.

90

90

90

90

97

**Cantus 1 + 2**

Lau - da - mus te. Be - ne - di - ci - mus te. Ad - o - ra - mus

Lau - da - mus te. Be - ne - di - ci - mus te. Ad - o - ra - mus

103

te. Glo - ri - fi - ca - mus te. Lau - da - mus te. Be - ne - di - ci - mus

te. Glo - ri - fi - ca - mus te. Lau - da - mus te. Be - ne - di - ci - mus

Lau - da - mus te.

Lau - da - mus te.

109

109

109

109

te. Ad - o - ra - mus

109

te. Ad - o - ra - mus

109

109

Be - ne - di - ci - mus te. Ad - o - ra - mus te.

109

Be - ne - di - ci - mus te. Ad - o - ra - mus te.

109

109

109

109

115

te. Glo-ri - fi - ca - - mus te. Ad - o - ra - mus te. Glo - ri - fi

te. Glo-ri - fi - ca - - mus te. Ad - o - ra - mus te. Glo - ri - fi

Ad - o - ra - mus te. Glo - ri - fi

Ad - o - ra - mus te. Glo - ri - fi

Ad - o - ra - mus te. Glo - ri - fi

Ad - o - ra - mus te. Glo - ri - fi

Ad - o - ra - mus te. Glo - ri - fi

Ad - o - ra - mus te. Glo - ri - fi

Ad - o - ra - mus te. Glo - ri - fi

Ad - o - ra - mus te. Glo - ri - fi

120 *Tutti*

120 *Tutti*

120 *Tutti*

ca - mus te. Gra - ti - as a - - gi - mus ti - - - -

120 *Tutti*

ca - mus te. Gra - ti - as a - - gi - mus ti - - - -

120 *Tutti*

Gra - ti - as a - - gi - mus ti - - - -

120 *Tutti*

ca - mus te. Gra - ti - as a - - gi - mus ti - - - -

120 *Tutti*

ca - mus te. Gra - ti - as a - - gi - mus ti - - - -

120 *Tutti*

Gra - ti - as a - - gi - mus ti - - - -

120 *Tutti*

Gra - ti - as a - - gi - mus ti - - - -

120 *Tutti*

Gra - ti - as a - - gi - mus ti - - - -

120 *Tutti*

Gra - ti - as a - - gi - mus ti - - - -

120 *Tutti*

Gra - ti - as a - - gi - mus ti - - - -

120 *Tutti*

Gra - ti - as a - - gi - mus ti - - - -

120 *Tutti*

Gra - ti - as a - - gi - mus ti - - - -



128

128

128

128

bi prop-ter ma - gnam prop-ter ma - gnam

128

bi prop-ter ma - gnam prop-ter ma - gnam,

128

bi prop-ter ma - gnam, prop-ter ma - gnam,

128

bi prop-ter ma - gnam prop-ter ma - gnam,

128

bi prop-ter ma - gnam Glo - - - - - ri - am tu - am,

128

bi prop-ter ma - gnam prop-ter ma - gnam

128

bi prop-ter ma - gnam prop-ter ma - gnam

128

128

132

132

132

132

prop-ter ma-gnam, prop-ter ma - gnam glo - - - - -

132

prop-ter ma-gnam, prop-ter ma - gnam glo - - - - -

132

prop-ter ma-gnam, prop-ter ma - gnam,

132

prop-ter ma-gnam glo - - - - - ri -

132

prop-ter ma-gnam glo - - - - - ri -

132

prop-ter ma-gnam,

132

Glo - - - - - ri - am tu - am, prop-ter

132

132

136

136

136

ri - am, glo - - - - ri - am tu - - - -

136

ri - am, prop - ter ma - gnam glo - - ri - am tu - -

136

prop - ter ma - gnam glo - - - - - - - - ri - am tu - -

136

am, prop - ter ma - - - gnam glo - ri - am tu - -

136

am, prop - ter ma - gnam glo - ri - am, glo - ri - am tu - -

136

prop - ter ma - gnam, prop - ter ma - gnam glo - ri - am tu - -

136

ma - gnam, prop - ter ma - gnam glo - ri - am, glo - ri - am tu - -

136

136

140

140

140

am. Do - mi - ne, Do - mi - ne De - us, Do-mi-ne, Do-mi-ne De - us,

140

am. Do - mi - ne, Do - mi - ne De - us, Do-mi-ne, Do-mi-ne

140

am. Do-mi-ne, Do-mi-ne De - us,

140

am. Do-mi-ne, Do-mi-ne De - us,

140

am. Do-mi-ne, Do-mi-ne

140

am. Do-mi-ne, Do-mi-ne De - us,

140

am. Do-mi-ne, Do-mi-ne

140

140

The image shows a musical score for a hymn. It consists of 14 staves. The first two staves are empty. The third staff is the vocal line, starting with a treble clef and a common time signature. The lyrics are: "Do - mi - ne, Do - mi - ne De - us, Do-mi-ne, Do-mi-ne De - us,". The fourth staff is a piano accompaniment, starting with a treble clef and a common time signature. The lyrics are: "Do - mi - ne, Do - mi - ne De - us, Do-mi-ne, Do-mi-ne". The fifth staff is another piano accompaniment, starting with a treble clef and a common time signature. The lyrics are: "Do-mi-ne, Do-mi-ne De - us,". The sixth staff is another piano accompaniment, starting with a treble clef and a common time signature. The lyrics are: "Do-mi-ne, Do-mi-ne De - us,". The seventh staff is another piano accompaniment, starting with a treble clef and a common time signature. The lyrics are: "Do-mi-ne, Do-mi-ne". The eighth staff is a bass line, starting with a bass clef and a common time signature. The lyrics are: "Do-mi-ne, Do-mi-ne De - us,". The ninth staff is another bass line, starting with a bass clef and a common time signature. The lyrics are: "Do-mi-ne, Do-mi-ne". The tenth staff is empty. The eleventh staff is empty. The twelfth staff is empty. The thirteenth staff is empty. The fourteenth staff is empty.

147

147

147

147

Do-mi-ne, Do-mi-ne De-us, Do-mi-ne De-us, Rex ce-le-stis, De-us Pa-ter o-mni-po-tens. Do - -

147

De - us, Do-mi-ne De-us, Rex ce-le-stis, De-us Pa-ter o-mni-po-tens.

147

Do-mi-ne, Do-mi-ne De-us, Do-mi-ne De-us, Rex ce-le-stis, De-us Pa-ter o-mni-po-tens.

147

Do-mi-ne, Do-mi-ne De-us, Do-mi-ne De-us, Rex ce-le-stis, De-us Pa-ter o-mni-po-tens.

147

De - us, Do-mi-ne De-us, Rex ce-le-stis, De-us Pa-ter o-mni-po-tens.

147

Do-mi-ne, Do-mi-ne De-us, Do-mi-ne De-us, Rex ce-le-stis, De-us Pa-ter o-mni-po-tens.

147

De - us, Do-mi-ne De-us, Rex ce-le-stis, De-us Pa-ter o-mni-po-tens.

147

147

151

151

151

mi - ne, Do - mi - ne Fi - li, Do - mi - ne, Do - mi - ne Fi - li,

151

Do - - - - mi - ne, Do - mi - ne Fi - li, Do - mi - ne, Do - mi - ne

151

Do - mi - ne, Do - mi - ne Fi - li,

151

Do - mi - ne, Do - mi - ne Fi - li,

151

Do - mi - ne, Do - mi - ne

151

Do - mi - ne, Do - mi - ne Fi - li,

151

Do - mi - ne, Do - mi - ne

151

151

157

Do - mi - ne, Do - mi - ne Fi - li, Do - mi - ne Fi - li u - ni - ge - ni - te Je - su Chri -

Fi - li, Do - mi - ne Fi - li u - ni - ge - ni - te Je - su Chri -

Do - mi - ne, Do - mi - ne Fi - li, Do - mi - ne Fi - li u - ni - ge - ni - te Je - su Chri - - - -

Do - mi - ne, Do - mi - ne Fi - li, Do - mi - ne Fi - li u - ni - ge - ni - te Je - - - su Chri -

Fi - li, Do - mi - ne Fi - li u - ni - ge - ni - te Je - su Chri -

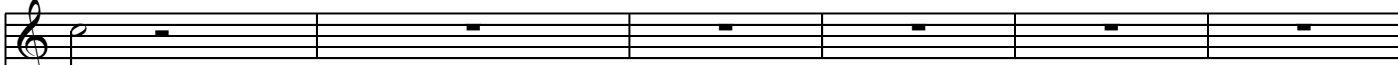
Do - mi - ne, Do - mi - ne Fi - li, Do - mi - ne Fi - li u - ni - ge - ni - te Je - su Chri -

Fi - li, Do - mi - ne Fi - li u - ni - ge - ni - te Je - su Chri -

157

157

162



162



162



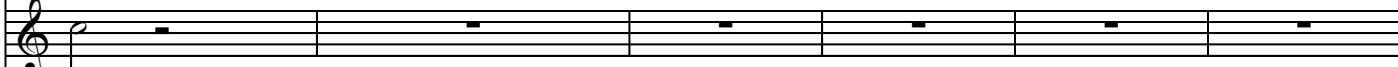
ste. Do - - - - mi - ne, Do - mi - ne De - - - us,

162



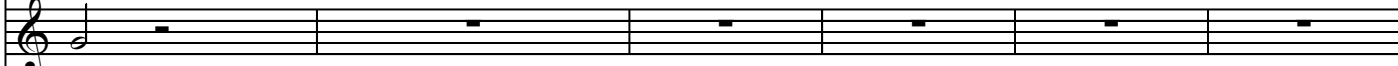
ste. Do - - - - mi - ne, Do - mi - ne De - - - us,

162



ste.

162



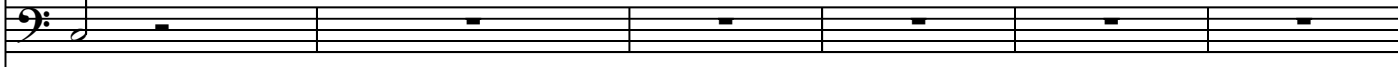
ste.

162



ste.

162



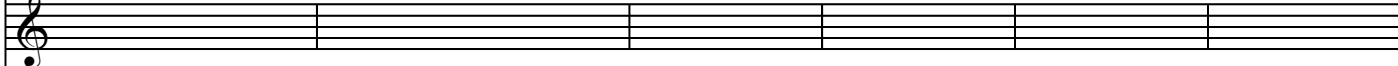
ste.

162

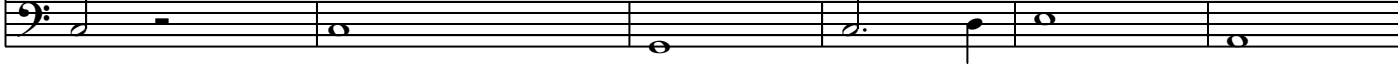


ste.

162



162





168

168

168

Do-mi-ne, Do-mi-ne De - us, Do-mi-ne, Do-mi-ne De - us, Do-mi-ne De-us, A-gnus De-i, Fi-li-us

168

Do-mi-ne, Do-mi-ne De - us, Do-mi-ne De-us, A-gnus De-i, Fi-li-us

168

Do-mi-ne, Do-mi-ne De - us, Do-mi-ne, Do-mi-ne De - us, Do-mi-ne De-us, A-gnus De-i, Fi-li-us

168

Do-mi-ne, Do-mi-ne De - us, Do-mi-ne De-us, A-gnus De-i, Fi-li-us

168

Do-mi-ne, Do-mi-ne De - us, Do-mi-ne, Do-mi-ne De - us, Do-mi-ne De-us, A-gnus De-i, Fi-li-us

168

Do-mi-ne, Do-mi-ne De - us, Do-mi-ne De-us, A-gnus De-i, Fi-li-us

168

Do-mi-ne, Do-mi-ne De - us, Do-mi-ne, Do-mi-ne De - us, Do-mi-ne De-us, A-gnus De-i, Fi-li-us

168

Do-mi-ne, Do-mi-ne De - us, Do-mi-ne De-us, A-gnus De-i, Fi-li-us

168

Do-mi-ne, Do-mi-ne De - us, Do-mi-ne, Do-mi-ne De - us, Do-mi-ne De-us, A-gnus De-i, Fi-li-us

168

Do-mi-ne, Do-mi-ne De - us, Do-mi-ne De-us, A-gnus De-i, Fi-li-us

172

Pa - tris.

172

Pa - tris.

172

Pa - tris.

172

Pa - tris.

172

Pa - tris.

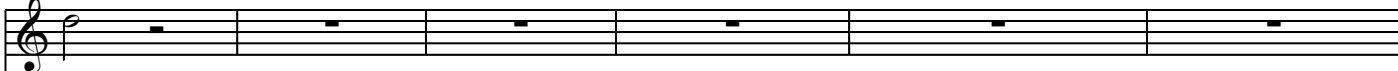
172

Pa - tris.

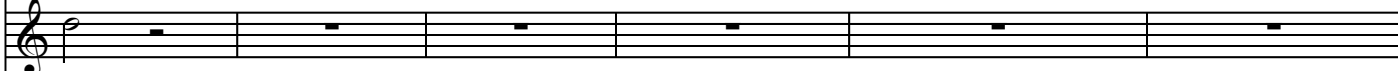
172

Pa - tris.

178



178



178

**Cantus 1+2, Bassus1**



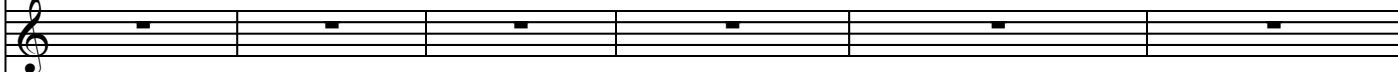
Qui tol - - - - - lis, qui tol - lis pec - ca - ta

178

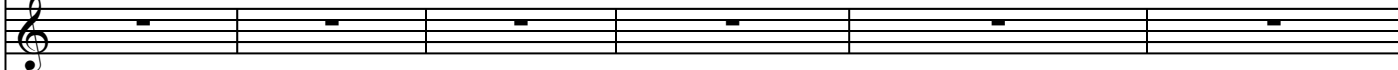


Qui tol - - - - - lis, qui

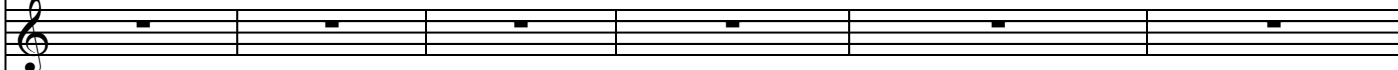
178



178



178

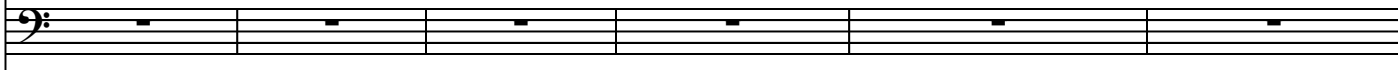


178

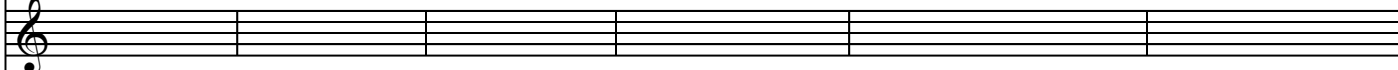


Qui tol - - - - - lis, qui

178



178



178



184

mun-di, qui tol-lis pec-ca - ta mun - di, mi-se-re-re, mi-se-re-re,

184

tol - lis pec-ca - - - ta, pec - ca - ta mun - di, mi-se-re-re,

184

184

184

184

184

184

tol - lis pec-ca - ta, pec-ca - - - ta mun - di, mi - - se - re - - re,

184

184

184

184

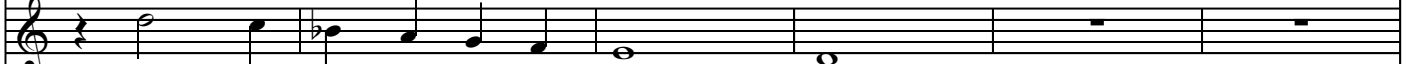
190



190

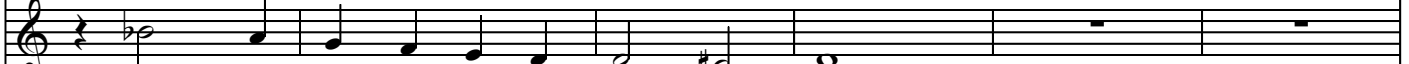


190



mi - se - re - re no - - - bis.

190



mi - se - re - re no - - - bis.

190



190



190



190

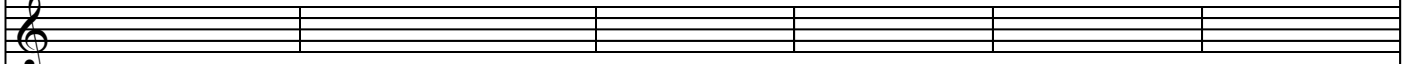


mi - - se - re - - - - re no - bis.

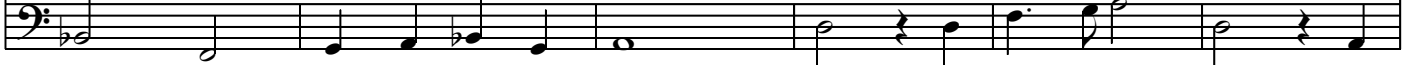
190



190



190



196

196

196

196

196

196

196

**Tenore 1 + 2**  
Qui tol - - - - -

196

196

196

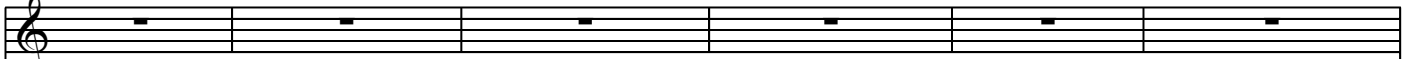
196

196

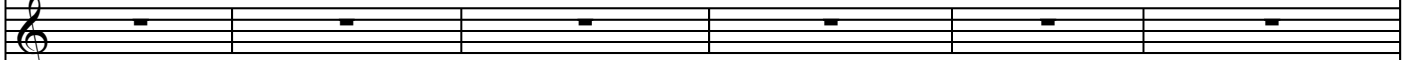
196

196

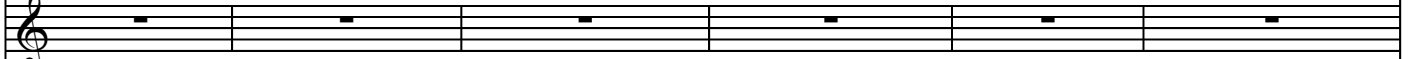
202



202



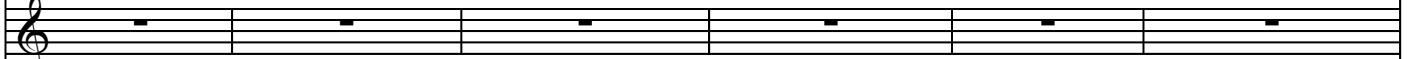
202



202



202



202



lis, qui tol - lis pec - ca - ta mun - di, pec - ca - ta mun - di,

202



lis, qui tol - lis pec - ca - ta mun - di, qui tol - lis pec - ca - ta mun - di, su - sci - pe,

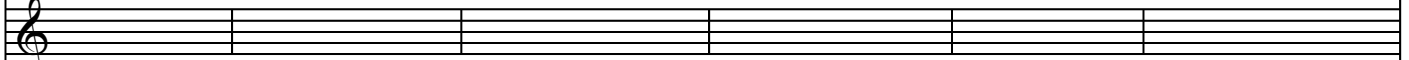
202



202



202



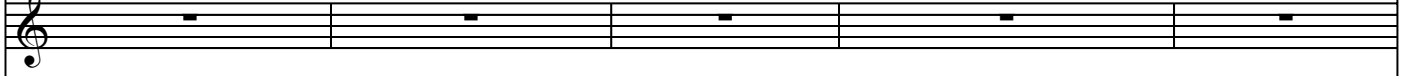
202



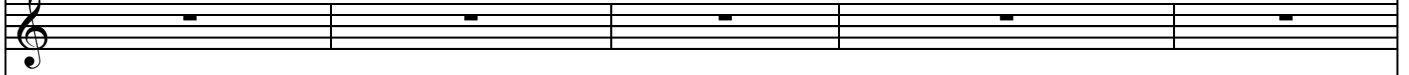
208



208



208



208



208



208



su - sci - pe, su - sci - pe, su - sci - pe de - pre - ca - ti - o - nem no -

208

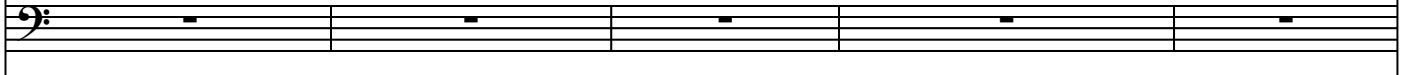


su - sci - pe, su - sci - pe, su - sci - pe de - pre - ca - ti - o - nem no -

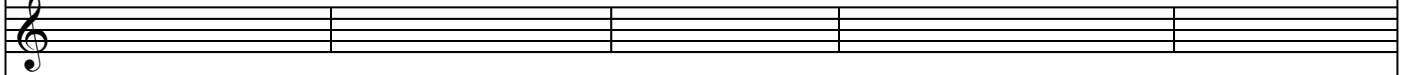
208



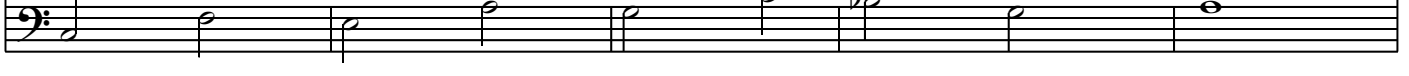
208



208



208





213

213

213

213

213

213

213

213

stram.

213

stram.

213

213

213

213

220

220

220

220

220

220

220

220 Bassus 1 + 2

Qui se - - - - - des, qui se - des ad dex - te - ram

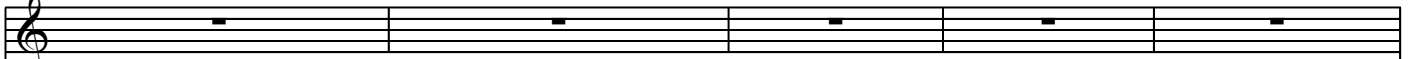
220

Qui se - - - - - des, qui

220

220

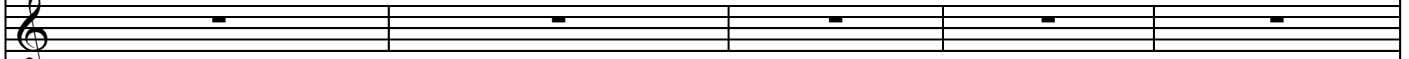
225



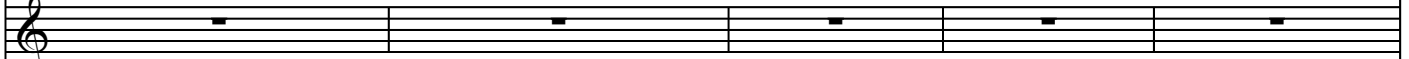
225



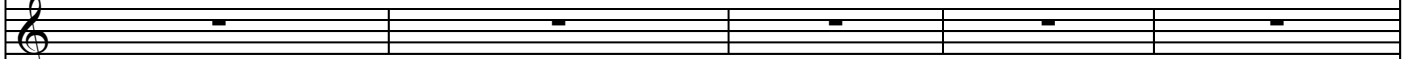
225



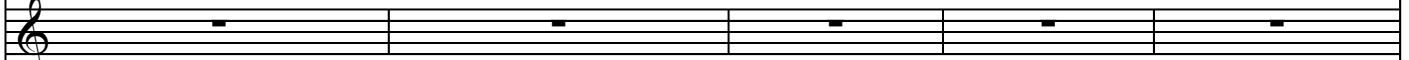
225



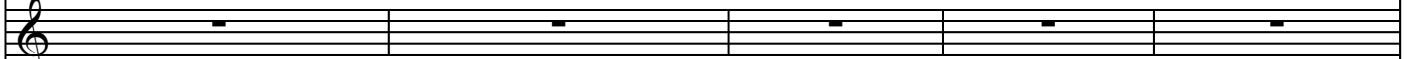
225



225



225



225



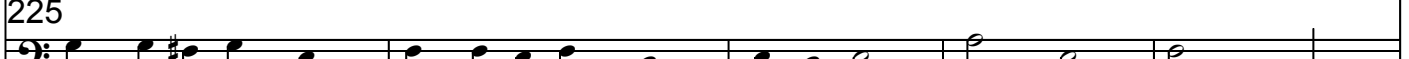
Pa - tris, qui se - des ad dex - te-ram Pa - - - tris, mi - se -

225



se - des ad dex - te-ram Pa - - - - - tris, mi - se - re - - - re,

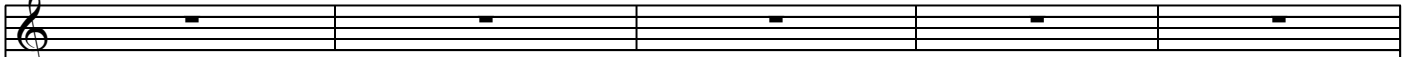
225



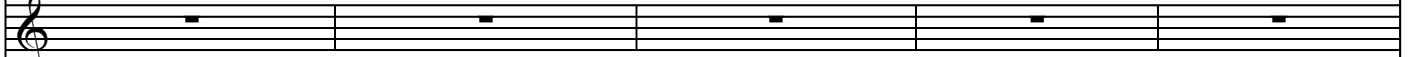
225



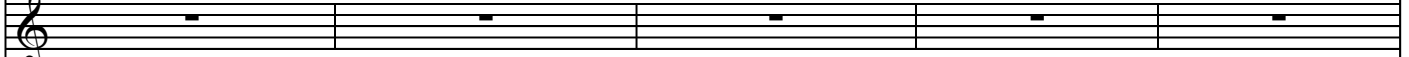
230



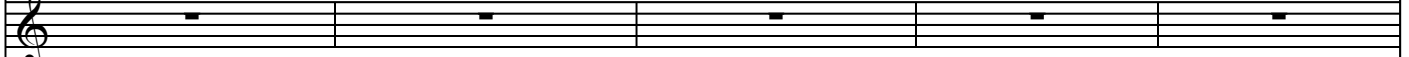
230



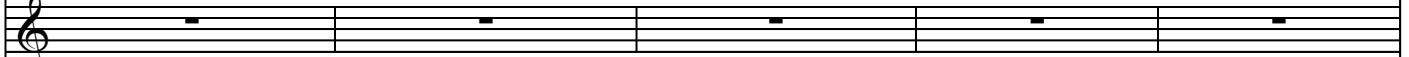
230



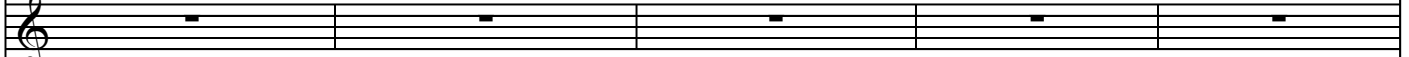
230



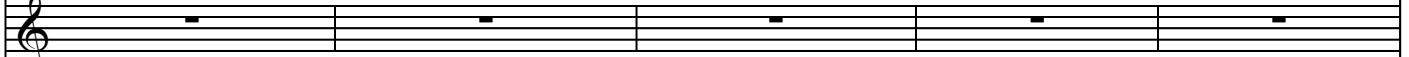
230



230



230

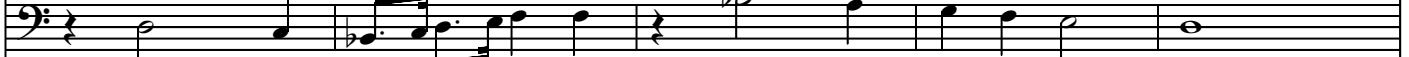


230



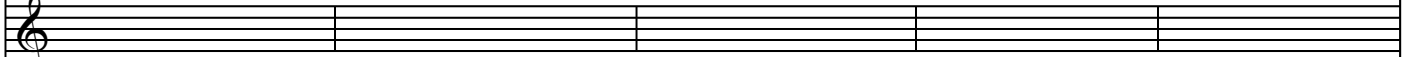
re - - - re, mi - se - re-re, mi - se - re - re no - bis.

230

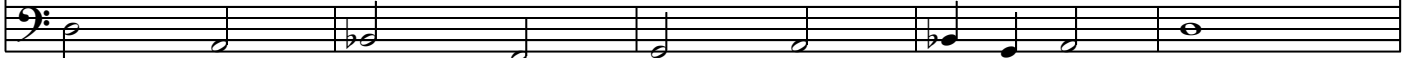


mi - se - re - - - re, mi - se - re - re no - bis.

230



230



235

235

235

Quo - ni - am Tu so - lus, so - lus, tu so - lus tu, tu so - lus san - ctus, tu so - lus so -

235

Quo - ni - am Tu so - lus tu, tu so - lus san - ctus, tu so - lus so -

235

Quo - ni - am

235

Quo - ni - am

235

Quo - ni - am

235

Quo - ni - am

235

Quo - ni - am

235

Quo - ni - am

235

Quo - ni - am

235

Quo - ni - am

235

Quo - ni - am

235

Quo - ni - am

235

Quo - ni - am

241

241

241

241

lus, tu so-lus san - ctus.

241

lus, tu so-lus san - ctus.

241

241

241

241

241

241

241

241

241

245



245



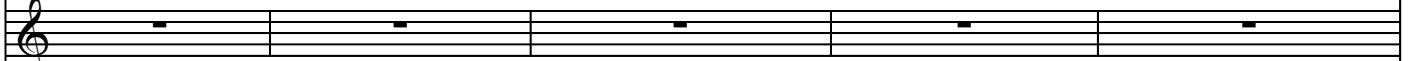
245



245



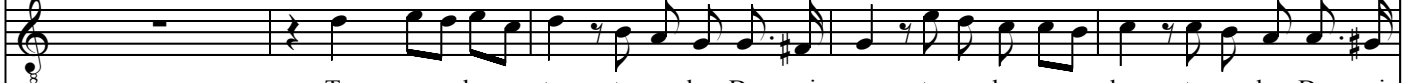
245



245 Tenore 1 + 2



245



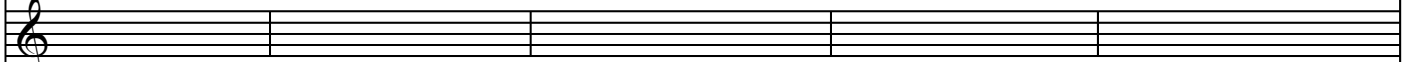
245



245



245



245







254

254

254

San - ctus, tu so - lus, tu,

254

San - ctus, tu so - lus, tu,

254

254

**Tenore 1 + 2**

254

Tu so - lus, tu, so - lus Al - tis - si - mus,

254

Tu so - lus, tu, so - lus Al - tis - si - mus,

254

254

254

254

259

259

259

tu so-lus San - ctus,

tu so - lus Al - tis - si -

259

tu so-lus San - ctus,

tu so - lus Al - tis - si -

259

259

tu so-lus Do - mi - nus,

tu so - lus Al - tis - si -

259

tu so-lus Do - mi - nus,

tu so - lus Al - tis - si -

259

259

259

259

264 *Tutti*

264 *Tutti*

264 *Tutti*

mus, tu so-lus Al - tis - si - mus, Je - su Chri - ste. Cum San - cto Spi - ri - tu,

264 *Tutti*

mus, tu so-lus Al - tis - si - mus, Je - su Chri - ste. Cum San - cto Spi - ri - tu,

264 *Tutti*

tu so-lus Al - tis - si - mus, Je - su Chri - ste. Cum San - cto Spi - ri - tu,

264 *Tutti*

mus, tu so-lus Al - tis - si - mus, Je - su Chri - ste. Cum San - cto Spi - ri - tu, in

264 *Tutti*

mus, tu so-lus Al - tis - si - mus, Je - su Chri - ste. Cum San - cto Spi - ri - tu,

264 *Tutti*

264 *Tutti*

264 *Tutti*

264 *Tutti*







285

285

285

285

Glo - - - - - ri - a, in Glo - - - - -

285

in Glo - - - - - ri - a,

285

Glo - ri - a, Glo - ri - a, Glo - ri - a, Glo - ri - a, in Glo - ri - a, Glo - ri - a,

285

Glo - - - - - ri - a, Glo - - - - -

285

in Glo - - - - - ri - a, Glo -

285

Glo - - - - - ri - a, Glo - - - - -

285

in Glo - - - - - ri - a,

285

285

285

288

288

288

ri - a, Glo - ri - a, Glo - ri - a De - i Pa - tris A - men, in Glo - ri - a,

288

Glo - - - - - ri - a, Glo - ri - a, Glo - ri - a De - i Pa - tris A - men, in Glo - ri - a,

288

Glo - ri - a, Glo - ri - a, Glo - ri - a, Glo - ri - a, Glo - ri - a De - i Pa - tris A - men, in Glo - ri - a,

288

ri - a, Glo - ri - a, Glo - ri - a, Glo - ri - a De - i Pa - tris A - men, in Glo - ri - a,

288

ri - a, in Glo - ri - a, Glo - ri - a, Glo - ri - a De - i Pa - tris A - men, in Glo - ri - a,

288

ri - a, Glo - ri - a, Glo - ri - a De - i Pa - tris A - men, in Glo - ri - a,

288

Glo - - - - - ri - a, Glo - ri - a, Glo - ri - a De - i Pa - tris A - men, in Glo - ri - a,

288

288



292

292

292

in Glo-ri - a De - i Pa - - - tris A - - - - - men.

292

in Glo-ri - a De - i Pa - - - tris A - - - - - men.

292

in Glo-ri - a De - i Pa - - - tris A - - - - - men.

292

in Glo-ri - a De - i Pa - - - tris A - - - - - men.

292

in Glo-ri - a De - i Pa - - - tris A - - - - - men.

292

in Glo-ri - a De - i Pa - - - tris A - - - - - men.

292

in Glo-ri - a De - i Pa - - - tris A - - - - - men.

292

292