

# LAUDATE PUERI

Vesperae longiores ac breviores una cum litanii Lauretanis

Psalmi de Beata Maria Virgine

**L** *Solo*  
Auda te pue ri Domi num lauda- te nomē Do- mi ni  
quis fi cut Dominus Dē us no ster in al tis ha bi tat

Heinrich Ignaz von Biber

1644 - 1704

Violin 1  
Violin 2  
Viola 1  
Viola 2  
Soprano *Solo*  
Alto  
Tenor  
Bass  
B.C.  
b3 b3 6 b b 6 6 5 6 6 7 6 6 6 3 4 3

Source: Edition Johann Baptist Mayr, Salzburg, 1693

# Biber - Laudate pueri

7

Vln. 1

Vln. 2

Vla. 1

Vla. 2

S

A

T

B

BC

ni,

*Solo*

Sit no-men Do - mi-ni be-ne-dic - tum, sit be-ne-dic - tum ex hoc nunc et us - que, et

6  
b3

6 5 6

7 6 3

6 b3

4 3

6 b3

6 5 6

6 7 6 3



12

Vln. 1

Vln. 2

Vla. 1

Vla. 2

S

A

T

B

BC

us-que in sae - cu-lum.

*Solo*

A so-lis or - tu us-que ad oc-ca - sum, ad oc-ca - sum lau-da -

6 b3

4 3

6 b

6 5 3

6 4 2

6 7 6 3

b3

4 3

b3

6 b3

Biber - Laudate pueri

17

Vln. 1

Vln. 2

Vla. 1

Vla. 2

S

A

T

B

BC

*Solo*

Ex-cel-sus su-per om-nes gen-tes Do - mi-

li-le no - men, no - men Do - mi-ni.

6 5 6 6 b3 5 6 4 3 5 6 6 6 4 3



22

Vln. 1

Vln. 2

Vla. 1

Vla. 2

S

A

T

B

BC

*Tutti*

Quis si - cut

nus, et su-per coe - los glo - ri-a, glo - ri - a, glo - ri - a e - jus. *Tutti* Quis si - cut Do - mi -

*Tutti* Quis si - cut Do - mi - nus De - us

Quis si - cut Do-mi - nus De - us no -

5 6 5 6 4 3 1 1 3 3 6 6 5 6 6 5 6 3 4 5 b 3

# Biber - Laudate pueri

27

Vln. 1

Vln. 2

Vla. 1

Vla. 2

S

A

T

B

BC

Do - mi - nus De - us no - ster in al - tis ha - bi - tat

nus De - us no - ster, qui in al - tis, in al - tis ha - bi - tat, in al - tis ha - bi - tat, *Solo*

no - ster, De - us no - ster, in al - tis ha - bi - tat et hu - mi - li -

ster, De - us no - ster, in al - tis ha - bi - tat

6 4 3 6 6 5 6 6 7 6 6 4 3 6

$\frac{6}{\flat 3}$

32

Vln. 1

Vln. 2

Vla. 1

Vla. 2

S

A

T

B

BC

et in ter - ra. *Solo* Sus - ci - tans a ter - ra, a ter - ra in - o -

et in ter - ra. *Tutti* *Solo*

a re - spi - cit in coe - lo et in ter - ra. Sus - ci - tans a ter - ra, a ter - ra, a ter - ra in - o -

et in ter - ra.

6 5 6 6 7 6 6 6 5 6 6 5 6 6 4 3 6 5 6 6 5 6 6 5 6 6 4 3

$\frac{6}{\flat 3}$

# Biber - Laudate pueri

37

Vln. 1

Vln. 2

Vla. 1

Vla. 2

S

A

T

B

BC

pem et de ster-co-re, de ster-co-re e - ri-gens pau - pe-rem, e - ri-gens pau - pe-rem,

ut col-lo-cet e-um,

pem et de ster-co-re, de ster-co-re e - ri-gens pau - pe-rem, e - ri-gens pau - pe-rem,

ut col-lo-cet e-um cum prin - ci - pi-

*Solo*

*Solo*

b 6 6 5 6 6 7 6 6 3 6 4 3 5 6 6

42

Vln. 1

Vln. 2

Vla. 1

Vla. 2

S

A

T

B

BC

qui ha - bi - ta - re

e - um cum prin-ci - pi-bus, cum prin - ci - pi-bus po - pu-li su - i, po - pu-li-su - i.

bus, cum prin-ci - pi - bus, cum prin - ci - pi-bus po - pu-li su - i.

4 3 4 3 1 1 3 3 6

# Biber - Laudate pueri

47

Vln. 1

Vln. 2

Vla. 1

Vla. 2

S  
fa - cit ste - ri - lem, ste - ri - lem in do - mo ma - trem di - li - o - rum lae - tan - tem, lae - tan - tem.

A

T

B

BC

6 5 6 6 7 6          6          6 6 5 6 6 7 6          6 4 3          b b

$\frac{6}{3}$   $\frac{4}{3}$   $\frac{b}{3}$   $\frac{6}{3}$            $\frac{6}{b3}$            $\frac{6}{3}$   $\frac{6}{3}$   $\frac{5}{3}$   $\frac{6}{3}$   $\frac{6}{3}$   $\frac{7}{b3}$   $\frac{6}{3}$           6 4 3



53

Vln. 1

Vln. 2

Vla. 1

Vla. 2

S  
*Tutti*  
Glo - ri - a Pa - tri et Fi - li - o et Spi - ri - tu - i Sanc - to,

A  
*Tutti*  
Glo - ri - a Pa - tri et Fi - li - o et Spi - ri - tu - i Sanc - to,

T  
*Tutti*  
Glo - ri - a Pa - tri et Fi - li - o et Spi - ri - tu - i Sanc - to,

B  
*Tutti*  
Glo - ri - a Pa - tri et Fi - li - o et Spi - ri - tu - i Sanc - to,

BC

5 6 7 6          3          b          5 5 6 6 7 6          b b3          5 3 6 6 7 6

$\frac{5}{3}$   $\frac{6}{3}$   $\frac{7}{b3}$   $\frac{6}{3}$           3          b           $\frac{5}{b3}$   $\frac{5}{3}$   $\frac{6}{4}$   $\frac{6}{2}$   $\frac{7}{b3}$   $\frac{6}{3}$

# Biber - Laudate pueri

58

Vln. 1

Vln. 2

Vla. 1

Vla. 2

S

A

T

B

BC

si - cut e - rat o, prin - ci - pi - o et nunc et sem - per et in sae - cu -

si - cut, si - cut e - rat o, prin - ci - pi - o et nunc et sem - per et in sae - cu -

si - cut e - rat in prin - ci - pi - o, e - rat in prin - ci - pi - o

si - cut, si - cut e - rat in prin - ci - pi - o, in prin - ci - pi - o

1 1 3 3 # 6 5 6 6 5 6 6 3 3 3 3 3 3 3 3

6 3 4

63

Vln. 1

Vln. 2

Vla. 1

Vla. 2

S

A

T

B

BC

la sae - cu - lo - rum. A - - - - - men, a - men,

la sae - cu - lo - rum. A - - - - - men, a - men, a - men,

sae - cu - lo - rum. A - - - - - men, a - men, a - men, a - men, a -

sae - cu - lo - rum. A - - - - - men, a - men, a - men, a - men, a - - - -

3 6 4 3 1 1 3 3 6 6 5 6 6 5 6 6 5 6 6 3 4 3 6 3 4 3 b3 6

3 4 2

Biber - Laudate pueri

68

Vln. 1

Vln. 2

Vla. 1

Vla. 2

S

A

T

B

BC

a - - - - - men, a - men, a - - - - men.

a - - - - - men, a - men, a - men, a - - - - men.

men, a - men, a - men, a - men, a - men, a - - - - men.

men, a - men, a - men, a - men, a - men, a - - - - men.

b6 5 6 6 5 6 6 6 3 4 3 # b 7 6 5 3 4 4 3

3 4 2

b3





# Violin 1

# LAUDATE PUERI

Vesperæ longiores ac breviores una cum litaniiis Lauretanis

Psalmi de Beata Maria Virgine

Heinrich Ignaz von Biber  
1644 - 1704

12

16

20

9

32

12

47

51

55

2

60

65

69

Source: Edition Johann Baptist Mayr, Salzburg, 1693

(C) Wim Looyestijn - 2015. May be freely copied for non-commercial use.

# Violin 2

# LAUDATE PUERI

Vesperæ longiores ac breviores una cum litaniiis Lauretanis

Psalmi de Beata Maria Virgine

Heinrich Ignaz von Biber  
1644 - 1704

11

16

20

30

35

50

53

58

63

67

Source: Edition Johann Baptist Mayr, Salzburg, 1693

(C) Wim Looyestijn - 2015. May be freely copied for non-commercial use.

# Viola 1

# LAUDATE PUERI

Vesperæ longiores ac breviores una cum litaniiis Lauretanis

Psalmi de Beata Maria Virgine

Heinrich Ignaz von Biber

1644 - 1704

11

15

19

28

32

53

57

61

65

69

6

18

# Viola 2

# LAUDATE PUERI

Vesperæ longiores ac breviores una cum litaniiis Lauretanis

Psalmi de Beata Maria Virgine

Heinrich Ignaz von Biber

1644 - 1704

11

15

19

27

31

35

56

60

64

68

Source: Edition Johann Baptist Mayr, Salzburg, 1693

(C) Wim Looyestijn - 2015. May be freely copied for non-commercial use.

Cello

# LAUDATE PUERI

Vesperæ longiores ac breviores una cum litaniiis Lauretanis

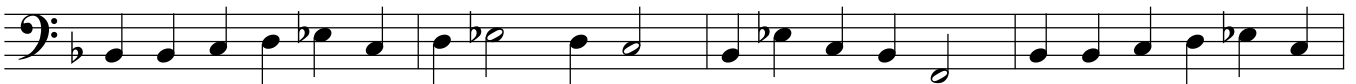
Psalmi de Beata Maria Virgine

Heinrich Ignaz von Biber

1644 - 1704



4



8



12



16



20



24



28



32



Biber - Laudate pueri

36



40



44



48



52



56



60



64



68

