

# God spake sometime in visions

Anthem for the Coronation of James II 1685

Symphony - Maestoso

1

9

17

25

33

41

50

58

72

81

89

97

130

137

144

156

165

Verse - con moto

Full - Risoluto

Blow: Anthem - Violino 1

175

186

195 Full - Più largamente

208 Energico

214

219 Verse - Con moto espressivo

229 Full - Maestoso

265

273

281 Verse - Animato Poco maestoso

310 Animato Maestoso Allegro con spirito

328 Full

336

344

351

358

365 Molto largamente

# God spake sometime in visions

Anthem for the Coronation of James II 1685

1 *Symphony - Maestoso*

8

16

24

32

39

51

60

78

86

94 *Verse - con moto*

126 *Full - Risoluto*

133

141

147

159 *Verse - con spirito*

168 3

178 4

189 2 Full - Più largamente 7

204 3/2

210 *Energico* 2

218 Verse - Con moto espressivo 4

226 Full - Maestoso 17 14

265 3/4

272 3/4

280 Verse - Animato Poco maestoso Animato 17 7 4

314 *Maestoso* *Allegro con spirito* 9

329 Full

337 3/4

345 3/4

351 3/4

358 3/2

365 *Molto largamente* 3/2

# God spake sometime in visions

John Blow 1649-1708

1 Symphony - Maestoso

Anthem for the Coronation of James II 1685

Measures 1-7 of the Viola part. The staff is in treble clef with a key signature of one sharp (F#) and a common time signature (C). The music begins with a whole rest followed by a series of eighth and quarter notes.

Measures 8-15. Measure 8 starts with a flat sign (Bb) and a fermata over the first note. The music continues with eighth and quarter notes.

Measures 16-23. The music continues with eighth and quarter notes, showing some melodic movement.

Measures 24-31. This section features more active eighth-note patterns.

Measures 32-39. The music continues with eighth and quarter notes.

Measures 40-47. Includes a whole rest in measure 41 before continuing with eighth notes.

Measures 48-55. The music continues with eighth and quarter notes.

Measures 56-63. Includes a fermata over a whole note in measure 62.

Measures 64-71. The music continues with eighth and quarter notes.

Measures 72-79. The music continues with eighth and quarter notes.

Measures 80-87. The music continues with eighth and quarter notes.

Measures 88-95. Includes a section marked 'Verse - con moto' with a 26-measure fermata.

Measures 96-103. Includes a section marked 'Full - Risoluto' with a 2-measure fermata.

Measures 104-111. The music continues with eighth and quarter notes.

Measures 112-119. Includes a 6-measure fermata.

Measures 120-127. The music continues with eighth and quarter notes.

Verse - con spirito

155

Full - Più largamente

164

Energico

209

216

Verse - Con moto espressivo

222

Full - Maestoso

248

268

276

Verse - Animato

Poco maestoso

Animato

Maestoso

Allegro con spirito

285

325

333

341

349

357

Molto largamente

364

# God spake sometime in visions

1 Symphony - Maestoso

Anthem for the Coronation of James II 1685



106 Blow: Anthem - Violoncello - Basso continuo





213

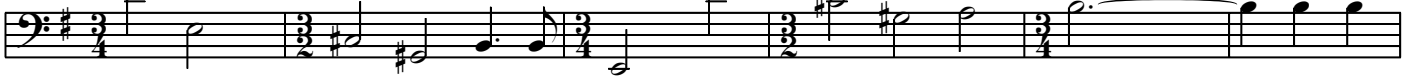


220

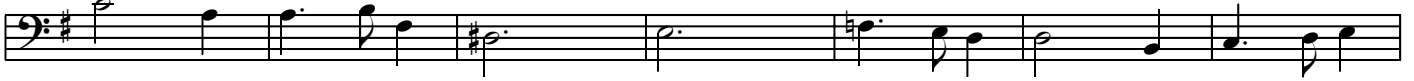
Verse - Con moto espressivo



227



233



240



247

Full - Maestoso



254



261



268

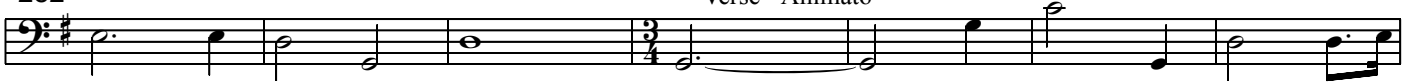


275



282

Verse - Animato



289



296



303

Poco maestoso



310

Animato

Maestoso





324



331

Full



338



345



352



359



365

Molto largamente

