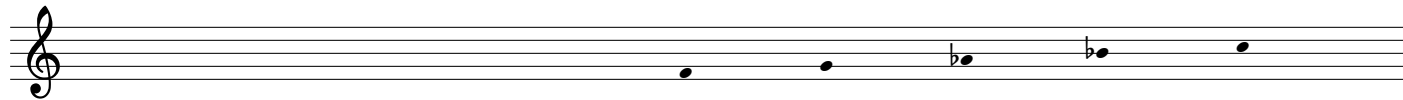


Ogni cosa è tua

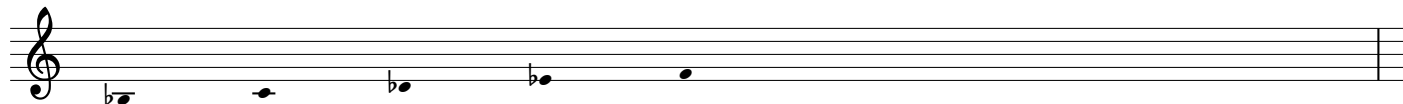
per coro a voci pari (femminili o virili) e bordone

Carlotta Ferrari 2017

Ogni cosa è tua, li peccati son miei.
(Lucia da Narni)



Trasposizione RPS del modo dorico



Mistico e libero

(8) O - gni co - sa, o - gni co - sa, o - gni

(8) O - gni co - sa, o - gni co - sa, o - gni

The first system consists of three staves. The top staff is a vocal line in treble clef with a key signature of one flat (Bb) and a common time signature (C). It contains the lyrics "O - gni co - sa, o - gni co - sa, o - gni". The middle staff is a vocal line in treble clef with a key signature of one flat (Bb) and a common time signature (C). It contains the lyrics "O - gni co - sa, o - gni co - sa, o - gni". The bottom staff is a drone line in bass clef with a key signature of one flat (Bb) and a common time signature (C), consisting of a continuous sequence of quarter notes: Bb4, C5, Bb4, C5, Bb4, C5, Bb4, C5, Bb4, C5, Bb4, C5, Bb4, C5, Bb4, C5.

14

co - sa, _____ o - gni co - sa, o - gni co - sa,

co - sa, _____ o - gni co - sa, o - gni co - sa,

The second system consists of three staves. The top staff is a vocal line in treble clef with a key signature of one flat (Bb) and a common time signature (C). It contains the lyrics "co - sa, _____ o - gni co - sa, o - gni co - sa,". The middle staff is a vocal line in treble clef with a key signature of one flat (Bb) and a common time signature (C). It contains the lyrics "co - sa, _____ o - gni co - sa, o - gni co - sa,". The bottom staff is a drone line in bass clef with a key signature of one flat (Bb) and a common time signature (C), consisting of a continuous sequence of quarter notes: Bb4, C5, Bb4, C5, Bb4, C5, Bb4, C5, Bb4, C5, Bb4, C5, Bb4, C5, Bb4, C5.

28

o - gni co - sa è tu - a, è tu - a,
o - gni co - sa è tu - a, è tu - a,

The musical score for measures 28-41 consists of three staves. The top staff is a vocal line in G-clef with lyrics. The middle staff is a vocal line in G-clef with lyrics. The bottom staff is a basso continuo line in C-clef with a continuous bass line of quarter notes.

42

li pec - ca - ti, li pec - ca - ti, son mie - i,
li pec - ca - ti, li pec - ca - ti, son mie - i,

The musical score for measures 42-56 consists of three staves. The top staff is a vocal line in G-clef with lyrics. The middle staff is a vocal line in G-clef with lyrics. The bottom staff is a basso continuo line in C-clef with a continuous bass line of quarter notes.

57

son mie - i, son mie - i.
son mie - i, son mie - i.

The musical score for measures 57-60 consists of three staves. The top staff is a vocal line in G-clef with lyrics. The middle staff is a vocal line in G-clef with lyrics. The bottom staff is a basso continuo line in C-clef with a continuous bass line of quarter notes.