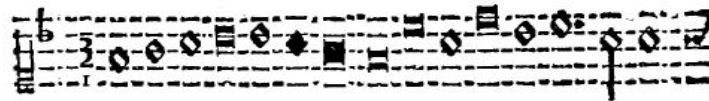


AVE REGINA CAELORUM

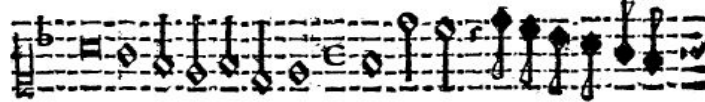
Giovanni Battista Riccio

1620

A Vna voce Soprano ouero Tenor



Ve Regina Caelorum Aue Aue Domina



Angelo

rum Salue Salue falue radix

A - ve Re - gi - na cae - lo - rum, a - ve,

6

a - ve Do - mi-na An - ge - lo - - - rum.

11

Sal - ve, sal-ve, sal-ve ra-dix por - ta ex qua mun-do lux est

15

or - - - ta, lux est or - - - ta.

#

Source: Il terzo Libro delle Divine Lodi Musicali

(C) Wim Looyestijn - 2015. May be freely copied for non-commercial use.

Riccio - Ave Regina Caelorum

20

A - ve Re - gi - na cae - lo - rum, a - ve,

25

a - ve Do - mi - na An - ge - lo - - - rum.

30

Gau - de, gau - de Vir - go Glo - ri - o - sa, su - per om - nes spe - ci -

6 6

34

o - sa, su - per om - nes spe - ci - o - sa.

4 3 4 3 4 3

39

A - ve Re - gi - na cae - lo - rum, a - ve,

44

a - ve Do - mi - na An - ge - lo - - - rum.

Riccio - Ave Regina Caelorum

49

Va - le, va - le o val - de de-co - ra,

55

et pro-no-bis, et pro - no-bis Chris-tum ex - o - ra, et pro no-bis, et pro no-bis Chris -

59

tum ex-o - ra, et pro-no-bis, et pro - no-bis Chris-tum ex - o - ra.

64

A - ve Re - gi - na cae - lo - rum, a - ve,

69

a - ve Do - mi-na An - ge - lo - - - rum. Dig-

74

na - re me lau - da - re te Vir - go sa - cra - ta, da

Riccio - Ave Regina Caelorum

78

mi - hi, da mi - hi, da mi - - - hi vir-tu -

4 3

Detailed description: This system contains measures 78 through 81. The vocal line (treble clef) begins with a half note 'mi', followed by a quarter rest, then 'hi' (quarter), a quarter rest, 'da' (quarter), a quarter rest, 'mi' (quarter), a quarter rest, 'hi' (quarter), a quarter rest, 'da' (quarter), a quarter rest, 'mi' (quarter), a quarter rest, 'hi' (quarter), a quarter rest, and 'vir-tu' (quarter). The bass line (bass clef) starts with a half note 'mi', followed by a half note 'hi', then a half note 'da', a half note 'mi', a half note 'hi', a half note 'da', a half note 'mi', a half note 'hi', a half note 'da', a half note 'mi', a half note 'hi', and finally a half note 'vir-tu'. A fermata is placed over the 'hi' in measure 81. Fingerings '4' and '3' are indicated below the bass line in measures 80 and 81 respectively.

82

tem con-tra - hos - tes tu -

Detailed description: This system contains measures 82 through 85. The vocal line (treble clef) has whole rests for measures 82, 83, and 84, followed by 'con-tra' (quarter), a quarter rest, 'hos' (quarter), a quarter rest, 'tes' (quarter), a quarter rest, and 'tu' (quarter). The bass line (bass clef) has a half note 'tem' in measure 82, followed by half notes 'con' (83), 'tra' (84), 'hos' (85), 'tes' (86), and 'tu' (87).

86

os. A - - - - -

Detailed description: This system contains measures 86 through 89. The vocal line (treble clef) has a whole note 'os.' in measure 86, followed by a whole note 'A' in measure 87, and whole rests in measures 88 and 89. The bass line (bass clef) has a half note 'os.' in measure 86, followed by half notes 'A' (87), 'A' (88), 'A' (89), and 'A' (90).

90

men.

5 6 4 3

Detailed description: This system contains measures 90 through 93. The vocal line (treble clef) has a half note 'men.' in measure 90, followed by a half note 'men.' in measure 91, and whole rests in measures 92 and 93. The bass line (bass clef) has a half note 'men.' in measure 90, followed by half notes 'men.' (91), 'men.' (92), and 'men.' (93). Fingerings '5', '6', '4', and '3' are indicated below the bass line in measures 90, 91, 92, and 93 respectively.