

LAUDATE PUERI

Salmi concertati a cinque et sei voci con doi violini.
Opera prima. Venetia M DC XXXXI

Giovanni Rovetta (1596-1668)

Concertato A 5 Voci, & due Violini. 20 QUINTO

Andate SIT nomen Domini Benedicam ex hoc nunc & vique nunc & vique in seculum Sit nomen Domini Benedicam excelsus excelsus super omnes gentes Dominus & super egiptus gloria gloria eius & super egiptus gloria eius sit gloria eius suscitatus a caetera.

21 QUINTO

Insuper & de stercore erigens pauperem & de stercore erigens pauperem qui habitare facit in Jerusalem in domo qui habitare facit in domo gloria Patri & Filio gloria patri & Spiritui Sancto & in gloria fecit in tempore Amen fecit in tempore Amen Amen Amen

Salmi Motetti & Canzon di Gio: Rovetta 2. 4. 6. 7. E. 11.

Violino 1

Violino 2

Canto

Quinto

Alto

Tenore

Basso

BC

Lau - da - te, lau - da - te pu - e - ri

Lau - da - te, lau - da - te pu - e - ri Do - mi - num,

Rovetta - Laudate pueri

9

V1

V2

C

Q

A

T

B

Bc

Do - mi - num, lau - da - te, lau - da - te no - men Do - mi -
 lau - da - te, lau - da - te no - men Do - mi - ni no - - - men Do - mi -

6 b b

16

V1

V2

C

Q

A

T

B

Bc

Sit - no - men Do - mi - ni Be - ne - dic - tum
 Sit - no - men Do - mi - ni Be - ne - dic - tum

ni.
 ni.

b

Rovetta - Laudate pueri

24

V1

V2

C

Q

A

T

B

Bc

ex hoc nunc et us - que, nunc et us - que in sae - cu -

ex hoc nunc et us - que, nunc et us - que in sae - cu -

Sit no - men Do - mi - ni be - ne - dic - tum,

Sit no - men Do - mi - ni be - ne - dic - tum,

6 # 6# 6

31

V1

V2

C

Q

A

T

B

Bc

lum.

lum.

ex hoc nunc et us - que, nunc et us - que in

ex hoc nunc et us - que, nunc et us - que in

6# # #

Rovetta - Laudate pueri

38

V1

V2

C

Q

A

T

B

Bc

Sit no-men Do - mi - ni be - ne - dic - tum

Sit no-men Do - mi - ni be - ne - dic - tum

sae - cu - lum. sit no-men Do - mi - ni be - ne - dic - tum.

sae - cu - lum. sit no-men Do - mi - ni be - ne - dic - tum.

A

b # 6

46

V1

V2

C

Q

A

T

B

Bc

so - - - - lis, a so - - - - lis or - tu us - que ad oc - ca -

46

Rovetta - Laudate pueri

54

V1

V2

C

Q

A

T

B

Bc

sum, lau - da - bi - le, lau - da - bi - le no - men - Do - mi - ni, lau - da - bi - le, lau - da - bi - le no - men - Do - mi -

b

62

V1

V2

C

Q

A

T

B

Bc

Ex -

Ex - cel - sus, ex - cel - sus su - per om - nes gen - tes Do - mi - nus,

ni.

Rovetta - Laudate pueri

69

V1

V2

C

Q

A

T

B

Bc

Ex - cel - sus, ex -
Ex - cel - sus, ex -
cel - sus, ex - cel - sus su - per om - nes gen - tes Do - mi - nus, ex - cel - sus, ex -
ex - cel - sus, ex -
ex - cel - sus, ex -

b

76

V1

V2

C

Q

A

T

B

Bc

cel - sus, ex - cel - sus su - per om - nes gen - tes Do - mi - nus,
cel - sus, ex - cel - sus su - per om - nes gen - tes Do - mi - nus,
cel - sus, ex - cel - sus su - per om - nes gen - tes, gen - tes Do - mi - nus,
cel - sus, ex - cel - sus su - per om - nes gen - tes, gen - tes Do - mi - nus,
cel - sus, ex - cel - sus su - per om - nes gen - - tes, gen - tes Do - mi - nus,

#6 6 6

Rovetta - Laudate pueri

84

V1

V2

C

Q

A

T

B

Bc

et su - per cae - los glo - ri - a, glo - ri - a e - - ius,

et su - per cae - los glo - ri - a, glo - ri - a e - - ius,

et - su - per - cae - los glo - ri - a, glo - ri - a e - - ius

et - su - per - cae - los glo - ri - a, glo - ri - a e - - ius

glo - ri - a, glo - ri - a e - - ius

5 6 6 5 6 6 b b # 6 6

91

V1

V2

C

Q

A

T

B

Bc

et su - per cae - los, et su - per cae - los glo - ri - a e - ius.

et su - per cae - los, et su - per cae - los glo - ri - a e - ius.

et su - per cae - los glo - ri - a, glo - ri - a e - ius.

et su - per cae - los glo - ri - a, glo - ri - a e - ius.

glo - ri - a, glo - ri - a e - ius.

5 6 6 5 6 6 6 5 6 5 6 6

Rovetta - Laudate pueri

99

V1

V2

C

Q

A

T

B

Bc

76 #

Quis si - cut Do-mi-nus De-us nos-ter, qui in al - tis ha - bi - tat et hu - mi - li-a, et hu-

107

V1

V2

C

Q

A

T

B

Bc

b

mi - li-a re - pli-cit in cae - lo, in cae-lo, in cae-lo, et in ter - ra.

Rovetta - Laudate pueri

117

V1

V2

C

Q

A

T

B

Bc

Sus-ci-tans a ter-ra,

Sus-ci-tans a

b

b

124

V1

V2

C

Q

A

T

B

Bc

sus-ci-tans a ter-ra,

sus - ci-tans a ter-ra

ter-ra, sus-ci-tans a ter-ra, sus-ci-tans a ter-ra

Sus - ci-tans a ter-ra,

sus-ci-tans a ter - ra,

b

Rovetta - Laudate pueri

131

V1

V2

C

Q

A

T

B

Bc

sus-ci-tans a ter - ra in - o - pem,

sus-ci-tans a ter-ra in - o - pem,

in - o - pem, sus-ci-tans a ter - ra

Sus-ci-tans a ter - ra in - o - pem, sus-ci-tans a

b

138

V1

V2

C

Q

A

T

B

Bc

et de ster - co-re e - ri-gens

et de ster - co-re e - ri-gens

et de ster - co-re e - ri-gens

in - o - pem, sus-ci-tans a ter - ra in - o - pem, et de ster - co-re e - ri-gens

ter - ra in - o - pem, et de ster - co-re e - ri-gens

138

b

6

Rovetta - Laudate pueri

146

V1

V2

C

Q

A

T

B

Bc

pau - pe rem, et de ster - co-re e - ri-gens pau - pe - rem.

pau - pe rem, et de ster - co-re e - ri-gens pau - pe - rem.

pau - pe - rem, et de ster - co-re e - ri-gens pau - pe - rem.

pau - pe rem, et de ster - co-re e - ri-gens pau - pe - rem. Ut col - lo-cet

pau - pe rem, et de ster - co-re e - ri-gens pau - pe - rem.

146

b

153

V1

V2

C

Q

A

T

B

Bc

e - um, ut col - lo-cet e - um, ut col - lo-cet e - um cum prin - ci - pi - bus,

153

6 6

Rovetta - Laudate pueri

161

VI

V2

C

Q

A

T

B

Bc

8 cum - prin - ci - pi - bus po - pu - li su - i, cum prin - ci - pi - bus po - pu - li su -

170

VI

V2

C

Q

A

T

B

Bc

8 i. Qui ha - bi - ta - re fa - cit ste - ri - lem in do - mo, qui ha - bi - ta - re

Qui ha - bi - ta - re fa - cit qui ha - bi - ta - re fa - cit

Qui ha - bi - ta - re fa - cit, qui ha - bi - ta - re fa - cit ste - ri - lem in do -

Qui ha - bi - ta - re fa - cit ste - ri - lem in do -

Rovetta - Laudate pueri

178

V1

V2

C

Q

A

T

B

Bc

fa - cit, qui ha - bi - ta - re fa - cit ste - ri - lem

ste - ri - lem in do - - mo, qui ha - bi - ta - re fa - cit ste - ri - lem

mo, qui - ha - bi - ta - re fa - cit ste - ri - lem

mo, qui ha - bi - ta - re fa - cit, ste - ri - lem ste - ri - lem

178

b *b*

184

V1

V2

C

Q

A

T

B

Bc

in do - mo.

in do - mo.

in do - mo.

ma - trem, ma - trem fi - li - o - rum, fi - li - o - rum lae - tan - tem, lae -

in do - mo.

184

#

Rovetta - Laudate pueri

191

VI

V2

C

Q

A

T

B

Bc

tan - - tem, fi - li - o - rum lae - tan - tem, lae - tan - tem, lae - tan - - tem.

6 #

198

VI

V2

C

Q

A

T

B

Bc

Glo - ri - a Pa - tri, glo - ri - a Pa - tri et Fi - li - o, glo - ri - a Pa - tri

Glo - ri - a Pa - tri, glo - ri - a Pa - tri et Fi - li - o, glo - ri - a Pa - tri

Glo - ri - a Pa - tri, glo - ri - a Pa - tri et Fi - li - o, glo - ri - a Pa - tri

Glo - ri - a Pa - tri, glo - ri - a Pa - tri glo - ri - a Pa - tri, glo - ri - a

Glo - ri - a Pa - tri, glo - ri - a Pa - tri et Fi - li - o, glo - ri - a Pa - tri

198

Rovetta - Laudate pueri

221

VI

V2

C

Q

A

T

B

Bc

e - - - - - rat, si - cut e - - - - -

rat, si - cut e - rat, si - cut - e - - - - -

si - cut e - rat, si - cut - e - - - - -

b *b*

227

VI

V2

C

Q

A

T

B

Bc

Et in sae - cu -

Et in sae - cu -

rat, in prin - ci - pi - o, et nunc et sem - per, et in sae - cu -

rat in prin - ci - pi - o, et nunc et sem - per, et in sae - cu -

rat in prin - ci - pi - o, et nunc et sem - per, et in sae - cu -

Rovetta - Laudate pueri

234

V1

V2

C

Q

A

T

B

Bc

la sae - cu - lo - - - - rum. A - - - - men. Sae - cu - lo - - - -

la sae - cu - lo - - - - rum. A - - - - men. Sae - cu - lo - - - -

la sae - cu - lo - rum. A - - - - men, sae - cu - lo - rum.

la sae - cu - lo - rum. A - - - - men, sae - cu - lo - rum.

la sae - cu - lo - - - - rum. A - - - - men, sae - cu - lo - - - -

239

V1

V2

C

Q

A

T

B

Bc

rum. A - - - - men. A - - - - men. A - - - - men.

rum. A - - - - men. A - - - - men. A - - - - men.

A - - - - men. A - - - - men. A - - - - men.

A - - - - men. A - - - - men. A - - - - men.

rum. A - - - - men. A - - - - men. A - - - - men.

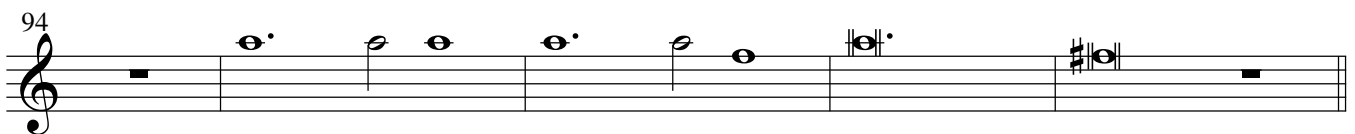
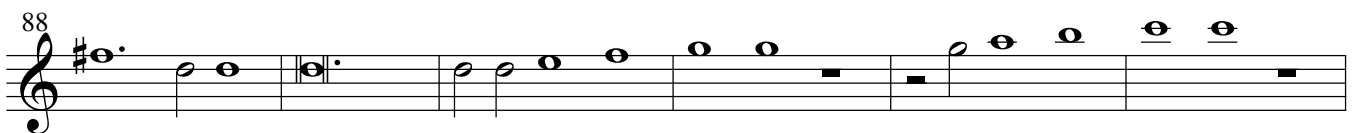
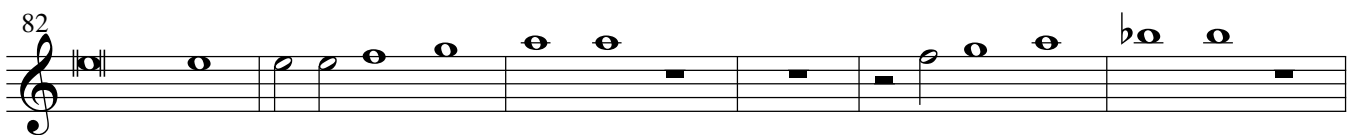
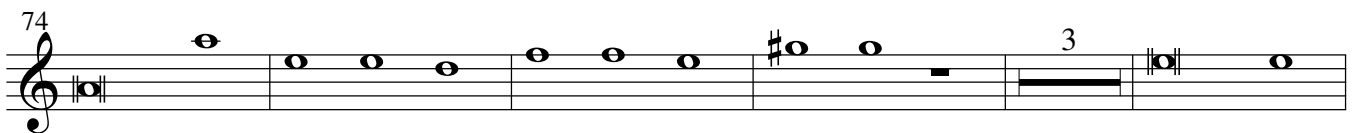
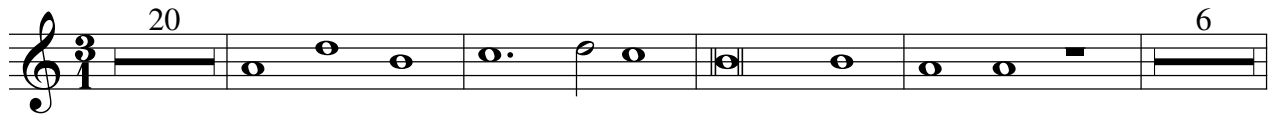
b *b*

Violino - 1

LAUDATE PUERI

Salmi concertati a cinque et sei voci con doi violini.
Opera prima. Venetia M DC XXXXI

Giovanni Rovetta (1596-1668)



Rovetta - Laudate pueri

122

15

142

148

186

192

198

208

236

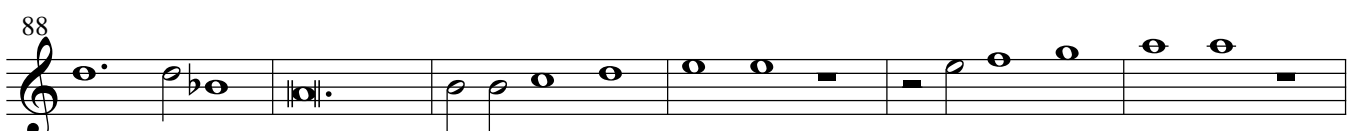
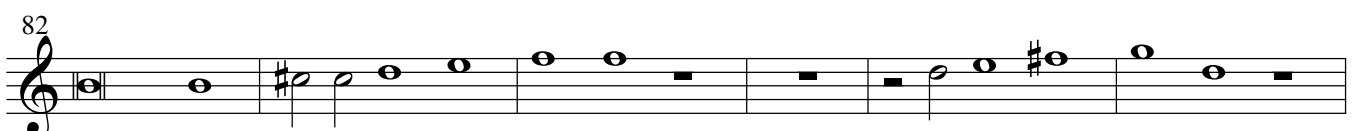
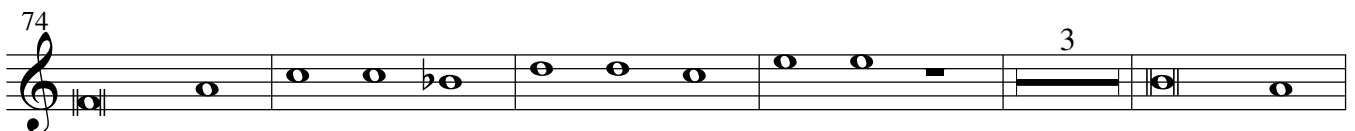
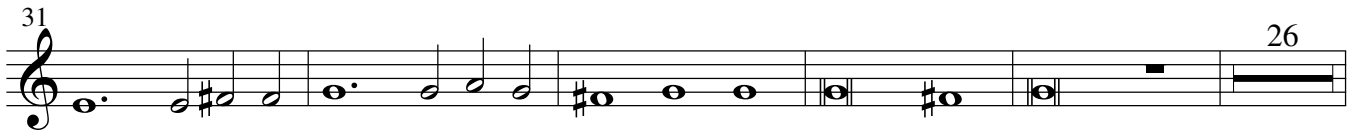
241

Violino - 2

LAUDATE PUERI

Salmi concertati a cinque et sei voci con doi violini.
Opera prima. Venetia M DC XXXXI

Giovanni Rovetta (1596-1668)



Rovetta - Laudate pueri

122

15

143

149

33

187

193

5

203

209

23

237

Rovetta - Laudate pueri

55

Musical staff 55, bass clef, key signature of one sharp (F#). The staff contains six measures of music. The notes are: G2, A2, B2, C3, D3, E3. A dynamic marking 'b' is placed below the staff at the end of the sixth measure.

61

Musical staff 61, bass clef, key signature of one sharp (F#). The staff contains six measures of music. The notes are: G2, A2, B2, C3, D3, E3. A dynamic marking 'b' is placed below the staff at the end of the sixth measure.

67

Musical staff 67, bass clef, key signature of one sharp (F#). The staff contains six measures of music. The notes are: G2, A2, B2, C3, D3, E3. A dynamic marking 'b' is placed below the staff at the end of the sixth measure.

73

Musical staff 73, bass clef, key signature of one sharp (F#). The staff contains six measures of music. The notes are: G2, A2, B2, C3, D3, E3. Dynamic markings 'b', '#', and '#' are placed below the staff at the end of the second, fourth, and sixth measures respectively.

79

Musical staff 79, bass clef, key signature of one sharp (F#). The staff contains six measures of music. The notes are: G2, A2, B2, C3, D3, E3. Fingerings '#6', '6', '6', '56', and '6' are placed below the staff at the end of the first, second, third, fourth, and sixth measures respectively.

85

Musical staff 85, bass clef, key signature of one sharp (F#). The staff contains six measures of music. The notes are: G2, A2, B2, C3, D3, E3. Fingerings '56', '6', '5', '6', and 'b' are placed below the staff at the end of the first, second, third, fourth, and fifth measures respectively. A dynamic marking 'b' is placed below the staff at the end of the sixth measure.

89

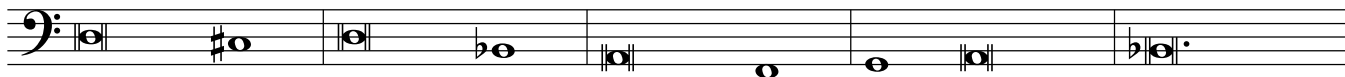
Musical staff 89, bass clef, key signature of one sharp (F#). The staff contains six measures of music. The notes are: G2, A2, B2, C3, D3, E3. Fingerings '#', '6', '6', '5', '6', '6', '56', '6', '5', and '6' are placed below the staff at the end of the first, second, third, fourth, fifth, sixth, seventh, eighth, ninth, and tenth measures respectively.

94

Musical staff 94, bass clef, key signature of one sharp (F#). The staff contains six measures of music. The notes are: G2, A2, B2, C3, D3, E3. Fingerings '56', '6', and '6' are placed below the staff at the end of the first, second, and third measures respectively.

Rovetta - Laudate pueri

99



76

104



#

#

109



b

115



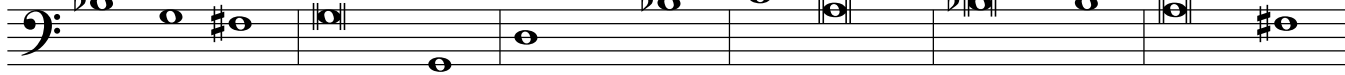
b

121



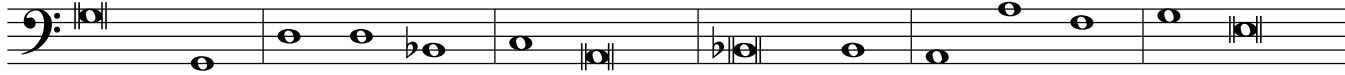
b

127



b

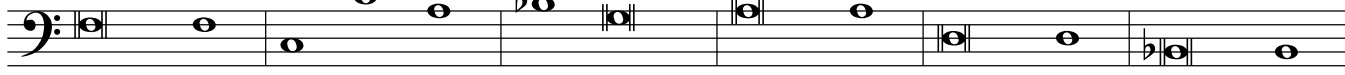
133



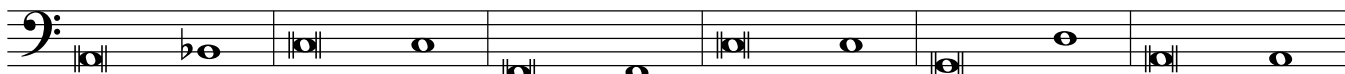
b

b

139



145



6

b

151



6

6

157



163



Rovetta - Laudate pueri

169

Musical staff for measure 169, bass clef. The staff contains six measures of music. The notes are: G2, A2, B2, C3, D3, E3. There are bar lines after the first, third, and fifth measures. The numbers 5 and 6 are written below the staff.

175

Musical staff for measure 175, bass clef. The staff contains six measures of music. The notes are: G2, A2, B2, C3, D3, E3. There are bar lines after the first, third, and fifth measures. The notes B2 and C3 in the third measure have a flat (b) below them. The letters 'b' and 'b' are written below the staff.

181

Musical staff for measure 181, bass clef. The staff contains six measures of music. The notes are: G2, A2, B2, C3, D3, E3. There are bar lines after the first, third, and fifth measures. The notes B2 and C3 in the third measure have a flat (b) below them. The notes D3 and E3 in the fourth measure have a sharp (#) above them.

187

Musical staff for measure 187, bass clef. The staff contains six measures of music. The notes are: G2, A2, B2, C3, D3, E3. There are bar lines after the first, third, and fifth measures. The notes B2 and C3 in the third measure have a flat (b) below them. The notes D3 and E3 in the fourth measure have a sharp (#) above them.

193

Musical staff for measure 193, bass clef. The staff contains six measures of music. The notes are: G2, A2, B2, C3, D3, E3. There are bar lines after the first, third, and fifth measures. The notes B2 and C3 in the third measure have a flat (b) below them. The notes D3 and E3 in the fourth measure have a sharp (#) above them. The number 6 and a sharp (#) are written below the staff.

199

Musical staff for measure 199, bass clef. The staff contains six measures of music. The notes are: G2, A2, B2, C3, D3, E3. There are bar lines after the first, third, and fifth measures.

205

Musical staff for measure 205, bass clef. The staff contains six measures of music. The notes are: G2, A2, B2, C3, D3, E3. There are bar lines after the first, third, and fifth measures. The note B2 in the fifth measure has a flat (b) below it.

211

Musical staff for measure 211, bass clef. The staff contains six measures of music. The notes are: G2, A2, B2, C3, D3, E3. There are bar lines after the first, third, and fifth measures. The notes B2 and C3 in the third measure have a flat (b) below them. The notes D3 and E3 in the fourth measure have a sharp (#) above them. The number 6 and a flat (b) are written below the staff.

217

Musical staff for measure 217, bass clef. The staff contains six measures of music. The notes are: G2, A2, B2, C3, D3, E3. There are bar lines after the first, third, and fifth measures. The notes B2 and C3 in the third measure have a flat (b) below them. The notes D3 and E3 in the fourth measure have a sharp (#) above them. The letter 'b' is written below the staff.

223

Musical staff for measure 223, bass clef. The staff contains six measures of music. The notes are: G2, A2, B2, C3, D3, E3. There are bar lines after the first, third, and fifth measures. The notes B2 and C3 in the third measure have a flat (b) below them. The notes D3 and E3 in the fourth measure have a sharp (#) above them. The letter 'b' is written below the staff.

229

Musical staff for measure 229, bass clef. The staff contains six measures of music. The notes are: G2, A2, B2, C3, D3, E3. There are bar lines after the first, third, and fifth measures.

236

Musical staff for measure 236, bass clef. The staff contains six measures of music. The notes are: G2, A2, B2, C3, D3, E3. There are bar lines after the first, third, and fifth measures. The notes B2 and C3 in the third measure have a flat (b) below them. The notes D3 and E3 in the fourth measure have a sharp (#) above them. The letter 'b' is written below the staff.