

# Surge, surge

## A4. Dialogo

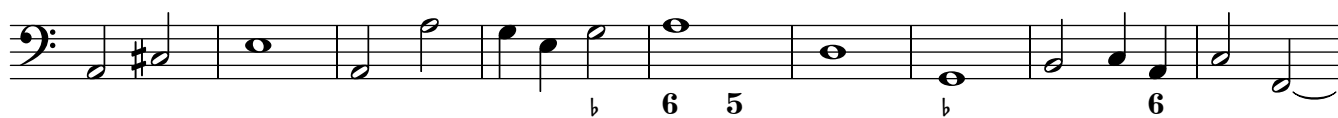
Seconda raccolta de sacri canti, Lorenzo Calvi

Basso continuo

Lodovico Bellanda (~1575 – 1613)



8



17



27



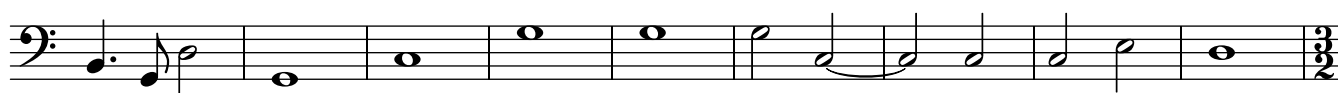
36



44



53



62



Copyright © 2019 by the Choral Public Domain Library (<http://www.cpdl.org>)

Edition may be freely distributed, duplicated, performed, or recorded.

Source: Universitätsbibliothek J. C. Senckenberg, Frankfurt a. Main, Mus W24 Nr. 1

