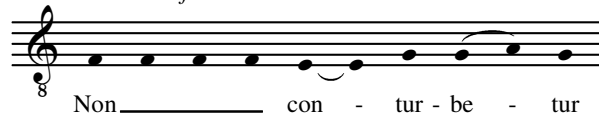


# Non conturbetur cor vestrum (2nd setting)

Edited by Jason Smart

John Sheppard (d.1558)

*3 rulers of the choir*



Treble:

Mean:

Countertenor 1:

Countertenor 2:

Tenor: [Missing]

Bass:

Main choir part (4 staves): 

Lyrics: cor ve - - - - - strum, e - - - - -

4 

Lyrics: cor ve - - - - - strum, e - - - - -

Lyrics: e - - - - - strum, e - - - - -

Lyrics: - - - - - strum, e - go

Lyrics: - - - - - strum, cor ve - - - - - strum,

Lyrics: - - - - - strum, \_\_\_\_\_

Lyrics: - - - - - strum, e - - - - - go va -

9

e - go va - do ad Pa - - - -  
 - go va - do ad Pa - - - -  
 va - do ad Pa - trem, \_\_\_\_\_ e - go va - do ad Pa -  
 e - go va - do ad Pa - - - - trem,  
 e - - - go va - do ad \_\_\_\_\_  
 - do ad Pa - - - trem, e - go

14

- - - - trem, ad Pa - - - -  
 - - - - trem: et dum as - sum - ptus fu - e -  
 - - - - trem: et dum as -  
 e - go va - do ad Pa - - - -  
 \_\_\_\_\_ Pa - - - - trem: \_\_\_\_\_ et dum  
 va - do ad Pa - - - - trem:

19

- - - - trem: et dum as - sum-ptus fu - e -  
 - ro, \_\_\_\_\_ et dum as - sum - ptus  
 - sum-ptus fu - e - ro a vo - bis, a vo - bis,  
 - trem, ad Pa - trem: et dum as - sum-ptus fu - e-ro a vo -  
 as - sum - ptus fu - e - ro \_\_\_\_\_ a vo - - -  
 et dum as - sum-ptus fu - e - ro a vo - bis, a

24

- ro a vo - - - - - bis  
 fu - e - ro a vo - bis mit - tam vo - bis,  
 a vo - - - - - bis mit - tam  
 - - - - - bis, a vo - - - - -  
 - - - - - bis \_\_\_\_\_  
 vo - - - - bis, a vo - - - - bis

mit - tam vo - bis, al - le -  
 al - le - lu - - - ia, mit - tam vo - bis,  
 vo - bis, al - le - lu - - - - - ia, al -  
 - bis mit - tam vo - bis, mit - tam vo - - - - bis, al -  
 - mit - tam - - - - - vo - bis, al -  
 mit - tam vo - bis, al - le - lu - - - - - ia,

**A**

- lu - ia, al - le - lu - ia, al - le - lu - ia, al - le - lu - ia,  
 al - le - lu - ia, al - le - lu - ia, al - le - lu - ia, spi - ri - tum  
 - le - lu - ia, al - le - lu - ia, al - le - lu - ia,  
 - le - lu - ia, al - le - lu - ia, al - le - lu - ia,  
 - le - lu - - - - - ia, spi - - -  
 al - le - lu - ia, al - le - lu - ia, spi -

37

spi - ri - tum ve - ri - ta -  
 ve - ri - ta - tis, spi - ri - tum ve - ri - ta -  
 spi - ri - tum ve - ri - ta - tis, spi - ri - tum  
 spi - ri - tum ve - ri - ta - tis, spi - ri - tum ve - ri - ta -  
 - ri - tum ve - ri - ta - tis,  
 - ri - tum ve - ri - ta - tis,

42

- tis, spi - ri - tum ve - ri - ta -  
 ve - ri - ta - tis, spi - ri - tum ve - ri - ta -  
 - tis, spi - ri - tum ve - ri - ta - tis, et  
 et



**B**

57

- - strum, et gau - de - bit cor ve - - - - strum. Al -  
 - strum, cor ve - - - - - - - - - - strum.  
 8 gau - de - bit cor - - - - ve - - - - - - - - - - strum.  
 8 - - - - strum, et gau - de - bit cor ve - - - - - - - - - - strum.  
 - - - - ve - - - - - strum. Al -  
 - strum, et gau - de - bit cor ve - - - - - strum, cor ve - - - - strum.

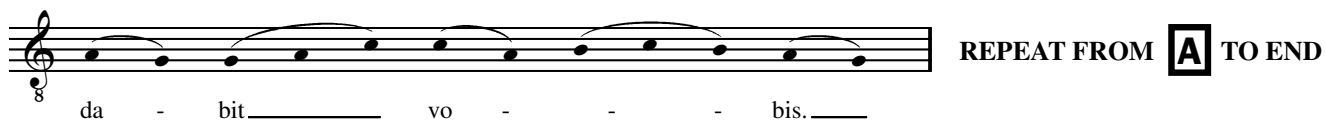
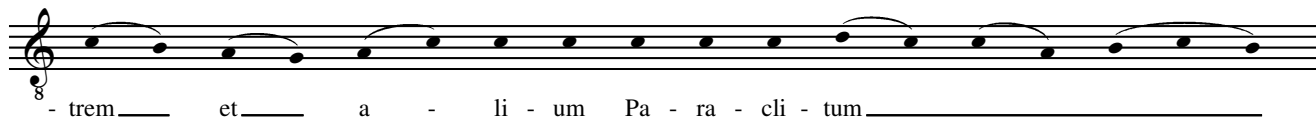
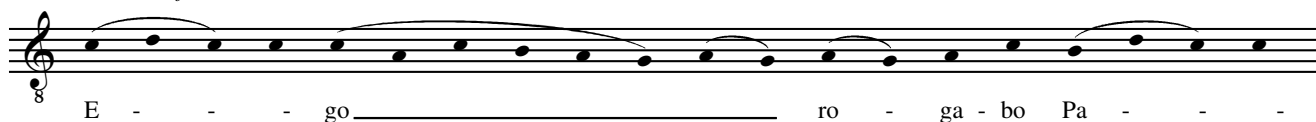
62

- le - lu - ia, al - le - lu - ia, al - le - lu - ia, al - le - lu - ia, al - le - lu - ia, al -  
 Al - le - lu - ia, al - le - lu - ia, al - le - lu - ia, al - le - lu - ia, al - le - lu -  
 Al - le - lu - - - - ia, al - le - lu -  
 Al - le - lu - ia, al - le - lu - ia, al - le - lu -  
 - le - - - - - - - - - - - - - - - -  
 Al - le - lu - ia, al - le - lu - ia,

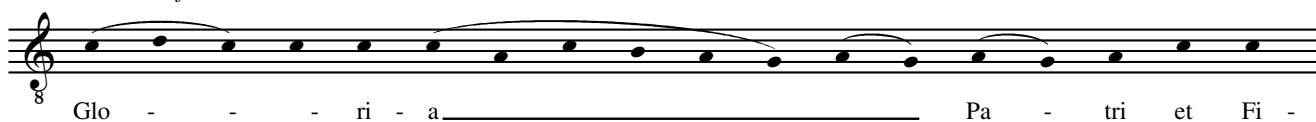




## 1st TIME

*3 rulers of the choir*

## 2nd TIME

*3 rulers of the choir*

### Translation

Let not your heart be troubled. I go unto the Father, and when I am taken from you I will send unto you, alleluia, the spirit of truth and your heart shall rejoice. Alleluia.

Ÿ I will pray the Father, and he shall give you another comforter:  
the spirit of truth and your heart shall rejoice. Alleluia.

Ÿ Glory be to the Father, and to the Son, and to the Holy Ghost.  
Alleluia.

(Responsum loosely based on *John 14*, vv. 1, 17 and *John 16*, v. 22; first verse from *John 14*, v.16.)

### Liturgical Function

In the Use of Sarum, *Non conturbetur* was the respond at First Vespers on the Feast of the Ascension, the third respond at Matins on the Saturday after the Ascension, the respond at First Vespers on the octave of the Ascension and the first respond at Matins on the Saturday before Whitsunday. Sheppard's setting was probably sung only on Ascension Day.

### Editorial Conventions

The nomenclature of the voice-parts follows the Tudor convention.

The original clef, staff signature, mensuration symbol and first note of each part are shown on the prefatory staves. Editorial accidentals are placed above the notes concerned and remain operative throughout the bar.

Ligatures are denoted by the sign  $\lrcorner$ .

Repeat signs in the underlay have been expanded using italicised text.

The lost Tenor part has been supplied from the plainsong source cited below and is printed in small notation.

### Sources

Polyphony: Oxford, Christ Church, Mus. 979–83 (c.1575–1581 with later additions; lacking T).

979	(M)	no.96	at end:	m <sup>f</sup> shepperde.
980	(Ct1)	no.96	at end:	m <sup>f</sup> S
981	(Ct2)	no.96	at end:	m <sup>f</sup> shepperd.
982	(Tr)	no.96	at end:	m <sup>f</sup> shepperd.
983	(B)	no.96	index heading:	m <sup>f</sup> : shepperde: 6: voc:
			at end:	m <sup>f</sup> shepperde

Plainsong: *Antiphonarij ad sum Sarum volumen primum vulgo pars hyemalis nuncupata* (Paris, 1519), f.248 of the Temporale.

### Notes on the Readings of the Sources

In the notes below, each reference to a bar or group of bars is separated by an oblique stroke. The order within each entry is: 1) bar number; 2) voice; 3) reading of the source. Pitches are in capital letters, preceded by a number where necessary, e.g. <sup>2</sup>E = second note E in the bar.

### Underlay

5 Tr *-strum* below <sup>2</sup>E / 14 Ct1 *Pa-* below D / 21 M *-ro* below A (and in 19) / 35 B slur for FE / 38 B *-tis* below C / 41 Tr *-tis* below <sup>2</sup>E, (42) *-ta-* below A (see below) / 56 B slur for CD / 60 B slur for DCA /

### Error

26 B G is F /