

Surge, propera, amica mea

a 2. Canto, e Basso

Symbolae diversorum musicorum, Lorenzo Calvi

Basso continuo

Tarquinio Merula (1595 – 1665)



9



17



24



Copyright © 2019 by the Choral Public Domain Library (<http://www.cpdl.org>)

Edition may be freely distributed, duplicated, performed, or recorded.

Source: Universitätsbibliothek J. C. Senckenberg, Frankfurt a. Main, Mus W24 Nr. 1

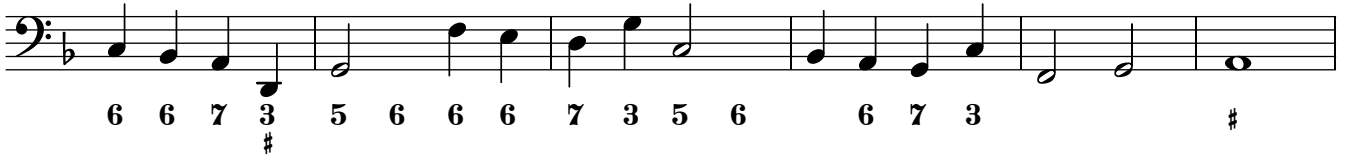
31



37



43



49



55



61



67



73

