

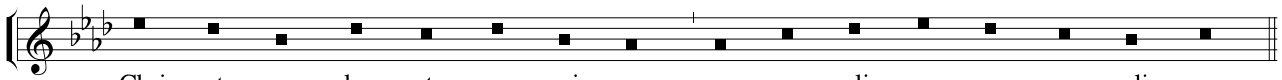
Conditor alme siderum

MICHAEL PRAETORIUS

No. 11 in *Hymnodia Sionia* (1611)



1. Con- di- tor al- me si- de- rum ae- ter- na lux cre- den- ti- um
 3. Ver- gen- te mun- di ve- spe- re u- ti spon- sus de thal- a- mo
 5. Te, San- cte fi- de que- su- mus, ven- tu- re ju- dex sae- cu- li,



Chri- ste re- dem- ptor om- ni- um ex- au- di pre- ces sup- pli- cum.
 e- gres- sus hon- es- tis- si- ma Vir- gi- nis ma- tris clau- su- la.
 con- ser- va nos in tem- po- re hos- tis a te- lo per- fi- di.



2. Qui con- do- lens in- te- ri- tu mor- tis pe- ri- re sae- cu- lum
 4. Cu- jus for- ti po- ten- ti- ae ge- nu cur- van- tur om- ni- a
 6. Sit Chri- ste rex pi- is- si- me ti- bi Pa- tri- que glo- ri- a



2. Qui con- do- lens in- te- ri- tu mor- tis pe- ri- re sae- cu- lum
 4. Cu- jus for- ti po- ten- ti- ae ge- nu cur- van- tur om- ni- a
 6. Sit Chri- ste rex pi- is- si- me ti- bi Pa- tri- que glo- ri- a



2. Qui con- do- lens in- te- ri- tu mor- tis pe- ri- re sae- cu- lum
 4. Cu- jus for- ti po- ten- ti- ae ge- nu cur- van- tur om- ni- a
 6. Sit Chri- ste rex pi- is- si- me ti- bi Pa- tri- que glo- ri- a



2. Qui con- do- lens in- te- ri- tu mor- tis pe- ri- re sae- cu- lum
 4. Cu- jus for- ti po- ten- ti- ae ge- nu cur- van- tur om- ni- a
 6. Sit Chri- ste rex pi- is- si- me ti- bi Pa- tri- que glo- ri- a



sal- va- sti mun- dum lan- gui- dum do- nans re- is re- me- di- um.
 cae- le- sti- a, ter- re- sti- a nu- tu fa- ten- tur sub- di- ta.
 cumSpi- ri- tu Pa- ra- cli- to in sem- pi- ter- na sae- cu- la. (PTO)



sal- va- sti mun- dum lan- gui- dum do- nans re- is re- me- di- um.
 cae- le- sti- a, ter- re- sti- a nu- tu fa- ten- tur sub- di- ta.
 cumSpi- ri- tu Pa- ra- cli- to in sem- pi- ter- na sae- cu- la. (PTO)



sal- va- sti mun- dum lan- gui- dum do- nans re- is re- me- di- um.
 cae- le- sti- a, ter- re- sti- a nu- tu fa- ten- tur sub- di- ta.
 cumSpi- ri- tu Pa- ra- cli- to in sem- pi- ter- na sae- cu- la. (PTO)



sal- va- sti mun- dum lan- gui- dum do- nans re- is re- me- di- um.
 cae- le- sti- a, ter- re- sti- a nu- tu fa- ten- tur sub- di- ta.
 cumSpi- ri- tu Pa- ra- cli- to in sem- pi- ter- na sae- cu- la. (PTO)

After verse 6:

A - - men.____
A - - men.____
A - - men.____
A - - men.____

Alternative setting of verse 3:

MICHAEL PRAETORIUS
No. 13 in *Hymnodia Sionia* (1611)

Ver- gen- te mun- di ve- - - spe- re, ver- gen- te mun- di ve- spe- re u- ti spon-
Ver- gen- te mun- di ve- spe- re,_____ ver- gen- te mun- di ve-

sus de tha- la- mo, u- ti spon- sus de tha- la- mo e- gres- sus
spe- re, u- ti spon- sus de tha- la- - mo, e- gres- sus ho-

ho- ne- stis- si- ma vir- - gi- nis, vir- - - gi- nis ma- tris
- ne- stis- si- ma vir- - gi- nis, vir- - - gi- nis ma- tris clau-

clau- su- la, vir- - gi- nis ma- tris clau- - su- la.
- - su- la, ma- - - tris clau- - su- la.