

LITANIAE LAURETANAE



František Tůma

1704 - 1774

Larghetto

Violin 1

Violin 2

Soprano

Alto

Tenor

Bass

Organ

4 # 6 5 #2 4 2 6 10 9 8 7 5 6 4

Tùma - Litaniae Lauretanae

6

Vln. 1

Vln. 2

S

A

T

B

Org.

Ky - ri - e e - le - i - son, e - le - i - son, e - - -

Ky - ri - e e - le - i - son, e - le - i - son, e - lei - son, e - le - i - son, e - le -

Ky - ri - e e - le - i - son, e -

Ky - ri - e e - le - i - son, e - le - i - son, e -

5 4# 4 # 5 2 6 4 b2 5 6 #4 2 6 #

11

Vln. 1

Vln. 2

S

A

T

B

Org.

lei - son, Chri - ste e - lei - son, Chri - ste au - di nos, au - - di nos,

i - son, Chri - ste e - lei - son, Chri - ste au - di nos, Chri - ste

- lei - son, Chri - ste e - lei - son, Chri - ste au - di

le - i - son, Chri - ste e - lei - son, Chri - ste

6 4 7 5 9 # 8 4 #4 2 5 4 4 6b

Tùma - Litaniae Lauretanae

16

Vln. 1

Vln. 2

S

Chri - ste ex - - - au - di, ex - au - di nos.

A

ex - au - di nos, Chri - ste ex - au - - - di nos.

T

8 nos, Chri - ste ex - au - - - - - di nos.

B

16 au - di nos, Chri - ste ex - au - - - - di nos.

Org.

6 7 6 7 6 5 6 6 5 # 6 5 6 5 6

21

Vln. 1

Vln. 2

S

mi - se - re - re no - bis, mi - se -

A

mi - se - re - re no - bis, mi - se -

T

8 Pa - ter de coe - lis De - us, Fi - li re - demp - tor mun - di De - us,

B

21 mi - se - re - re no - bis, mi - se -

Org.

9 6 # 6 6# 6 5 # 6 7 6# 6 b7 6

Tùma - Litaniae Lauretanae

26

Vln. 1

Vln. 2

S

A

T

B

Org.

re-re no - bis, mi-se - re-re no - bis. San-cta Tri-ni-tas u - nus

re-re no - bis, mi-se - re-re no - bis. San-cta Tri-ni-tas u - nus

Spi - ri-tus San-cte De-us, San-cta Tri-ni-tas, san-cta Tri-ni-tas u - nus

re-re no - bis, mi-se - re-re no - bis. San-cta Tri-ni-tas u - nus

7 6# 6 4 6 7 4 6 7 6 4 b7

30

Vln. 1

Vln. 2

S

A

T

B

Org.

De-us, mi-se - re-re no - bis, mi-se - re-re no - bis.

De-us, mi-se - re-re no - bis, mi-se - re - re no - bis.

De-us, mi-se - re-re no - bis, mi-se - re-re no - bis.

De-us, mi-se - re-re no - bis, mi-se - re-re no - bis.

De-us, mi-se - re-re no - bis, mi-se - re-re no - bis.

5 4 3 6 7 # 5 4 # 6b 5 7 # 5 4 # 6 5

Tũma - Litaniae Lauretanae

34

Vln. 1

Vln. 2

S

A

T

B

Org.

5
4 #

4
#2

4
2 6

#7
#5

5
4 #

39

Vln. 1

Vln. 2

S

A

T

B

Org.

San - cta, san - cta Ma - ri - a, san - cta De - i Ge-ni-trix,

San - cta, san - cta Ma - ri - a, san - cta De - i Ge-ni-trix,

San - cta, san - cta Ma - ri - a, san - cta De - i Ge-ni-trix,

San - cta, san - cta Ma - ri - a, san - cta De - i Ge-ni-trix,

6#
5

5
4#

6
5

#

6

Tùma - Litaniae Lauretanae

45

Vln. 1

Vln. 2

S

san - cta Vir - go vir - gi-num, o - ra, o - ra pro

A

san - cta Vir - go vir - gi-num, o - ra, o - ra pro no - bis,

T

8 san - cta Vir - go vir - gi - num, o - ra, o - ra pro

B

45 san - cta Vir - go vir - gi-num, o - ra, o - ra pro no - bis,

Org.

6^b 5 # 4 6 5 4

51

Vln. 1

Vln. 2

S

no - bis, o - ra pro no - bis, pro no - bis.

A

o - ra pro no - bis, o - ra pro no - - - bis.

T

8 no - bis, o - ra pro no - bis, pro no - bis.

B

51 o - ra pro no - bis, o - ra pro no - - - bis.

Org.

6 5 5 6^b 5 5 4 #

Tùma - Litaniae Lauretanae

57

Vln. 1

Vln. 2

S

A

T

B

Org.

6# 5 #

64

Vln. 1

Vln. 2

S

A

T

B

Org.

Ma - ter Chri - sti, ma - ter, ma - ter di - vi - nae gra - ti - ae, ma - ter pu - ris - si - ma,

Ma - ter Chri - sti, ma - ter, ma - ter di - vi - nae gra - ti - ae, ma - ter pu -

6 5

6

Tùma - Litaniae Lauretanae

72

Vln. 1

Vln. 2

S

A

T

B

Org.

ma - ter cas - tis - si - ma, o - - - - - ra pro no - bis.

ris - si - ma, ma - ter cas - tis - si - ma, o - ra pro no - bis.

4 5

79

Vln. 1

Vln. 2

S

A

T

B

Org.

Ma - ter, Ma - ter in - vi - o la - ta, Ma - ter, Ma - ter

5 6 6̣ 4 5 3 4 2 5 6 5

Tùma - Litaniae Lauretanae

86

Vln. 1

Vln. 2

S

A

T

B

Org.

in - te - me - ra - ta, o - ra, o - ra pro no - bis.

4 5 3 7 7 4 5 6 5

93

Vln. 1

Vln. 2

S

A

T

B

Org.

Ma - ter a - ma - bi - lis, ma - ter ad - mi - ra - bi - lis o - ra pro no - - -

Ma - ter a - ma - bi - lis, ma - ter ad - mi - ra - bi - lis o - - - ra pro

4 5 4 4 5 # 5 6# 5

Tùma - Litaniae Lauretanae

99

Vln. 1

Vln. 2

S

A

T

B

Org.

9 8

4 5 #

#

- - - bis, pro no - - bis.

no - bis, pro no - bis.

tr

105

Vln. 1

Vln. 2

S

A

T

B

Org.

105

#

tr

3

Tùma - Litaniae Lauretanae

110

Vln. 1

Vln. 2

S

A

T

B

Org.

Vir - go pru - den - tis - si - - - ma, o - ra, o - ra pro -

1 1 1 1 5 4 6 5 3

115

Vln. 1

Vln. 2

S

A

T

B

Org.

Vir - go

Vir - go pru - den - tis - - - si - ma, vir - go

tis - - - si - ma, o - ra, o - ra pro no - - - bis. vir - go

no - bis, vir - go

4 5 6 2 6 5 6

Tùma - Litaniae Lauretanae

120

Vln. 1

Vln. 2

S

A

T

B

Org.

pru - - - den - tis - - - si - ma, o - ra, o - ra pro -
 ve - - - ne - ran - - - - - da, o - ra, o - - - ra
 ve - - - ne - ran - - - - - da, o - ra, o - - - ra
 ve - - - ne - - - - - ran - - - - - da, o - ra, o - ra pro

6⁴ 4 6 6

124

Vln. 1

Vln. 2

S

A

T

B

Org.

no - - - - bis, vir - go prae - - - - di - can - - - da,
 pro - no - - - - bis, vir - go prae - - - - di - can - - - da,
 pro - no - - - - bis, vir - go prae - - - - di - can - - - da, o - ra,
 no - - - - bis, vir - go prae - - - - di - can - - - da,

2 6 # 1 1

Tùma - Litaniae Lauretanae

129

Vln. 1

Vln. 2

S

A

T

B

Org.

o - ra, o - ra pro no - bis, pro

o - ra,

o - ra pro no - bis, o - ra pro no - bis, pro

o - ra, o - ra pro no - bis, o - ra, o - ra pro

1 1 1 1 3 3 6 6# #3 $\frac{5}{3}$ 5 6 #

135

Vln. 1

Vln. 2

S

A

T

B

Org.

no - bis, o - ra pro no - - - bis, vir - go ve - ne - ran - da,

o - ra pro no - bis, pro no - - - bis, vir - go ve - ne - ran - da,

no - bis, o - ra pro no - - - bis, vir - go ve - ne - ran - da,

no - - - bis, pro no - - - bis.

5 6 # $\frac{5}{4}$ # $\frac{5}{\#}$ 6 $\frac{5}{4}$ #

Tùma - Litaniae Lauretanae

155

Vln. 1

Vln. 2

S

A

T

B

Org.

o - ra, o - - - - ra pro no - - - bis.

o - ra, o - - - - ra pro no - - - bis.

o - ra, o - - - - ra pro no - - - bis.

o - ra, o - - - - ra pro no - - - bis.

o - ra, o - - - - ra pro no - - - bis.

7 9 6 4 4 3

Affettuoso

162

Vln. 1

Vln. 2

S

A

T

B

Org.

6 6 # 6 7 # 6#

Tùma - Litaniae Lauretanae

166

Vln. 1

Vln. 2

S

A

T

B

Org.

6 5 6 \flat 5 \sharp # 6 6 5 \sharp # 4 3 9 8 5

170

Vln. 1

Vln. 2

S

A

T

B

Org.

Spe - cu - lum jus - ti - ti - ae, o - ra pro no - bis.

4 # \flat 6 \sharp 5 \sharp 6 \sharp 6 6 \sharp 4 3 6 6 #

Tùma - Litaniae Lauretanae

174

Vln. 1

Vln. 2

S

Se-des sa-pi-en-ti-ae, o - ra pro no - bis, cau-sa no-strae lae-ti - ti-ae, o - ra pro no - bis, o-ra,

A

T

B

Org.

4 3 6 6 6 4 6

178

Vln. 1

Vln. 2

S

o - - - - - ra, o - ra, o - ra pro no - bis.

A

T

B

Org.

9 9 9 9 6b 5 4 6 6 6b

Tùma - Litaniae Lauretanae

182

Vln. 1

Vln. 2

S

A

T

B

Org.

Vas spi-ri - tu -

Vas spi-ri - tu -

Vas spi-ri - tu -

4 ♯ b 5 6b 5 6 6/5 ♯ 5 6b ♯ ♯

186

Vln. 1

Vln. 2

S

A

T

B

Org.

a - le, vas ho-no - ra - bi-le, vas in-

a - le, vas ho-no - ra - bi-le, vas in-

a - le, vas ho-no - ra - bi-le, vas in-

Tuma - Litaniae Lauretanae

190

Vln. 1

Vln. 2

S

A

T

B

Org.

sig - ne-de vo - ti - o - nis, o - ra, o - ra, o - ra pro no - bis.

sig - ne-de vo - ti - o - nis, o - - - ra, o - ra pro no - bis.

190 sig - ne-de vo - ti - o - nis, o - ra, o - - - ra pro no - - - bis.

6 5 b 7 6 4 #
4 3 b b # 4 4 #

194

Vln. 1

Vln. 2

S

A

T

B

Org.

194 Ro - sa mi - sti-ca, tu - ris Da - vi - di-ca, tu-ris, tu-ris e - bur - ne-a, o - - - -

Tũma - Litaniae Lauretanae

198

Vln. 1

Vln. 2

S

A

T

B

Org.

Do - mus au - re-a, fae - de-ris ar - ca, ja - nu-a cae-li, o -

Do - mus au - re-a, fae - de-ris ar - ca, ja - nu-a cae-li, o -

Do - mus au - re-a, fae - de-ris ar - ca, ja - nu-a cae-li, o -

ra pro no - bis. Do - mus au - re-a, fae - de-ris ar - ca, ja - nu-a cae-li, o -

202

Vln. 1

Vln. 2

S

A

T

B

Org.

ra pro - no - bis, pro no - bis, stel-la ma-tu - ti - na,

ra, o - ra pro-no - bis, pro no - bis, stel-la ma-tu - ti - na,

ra, o - ra pro no - bis, stel-la ma-tu - ti - na, o - ra, o-ra pro no-bis, pro no - -

ra, o - ra pro - no - bis, pro no - bis, stel-la ma-tu - ti - na, o - ra, o-ra pro

Tùma - Litaniae Lauretanae

206

Vln. 1

Vln. 2

S

A

T

B

Org.

o - ra, o - ra pro no-bis, o - ra pro no - bis, o - ra, o - ra, o - ra pro
 bis, o - ra pro no - bis, o - ra pro-no - bis, o - ra, o - ra, o - ra pro
 no-bis, pro no - bis, o - ra pro no - bis, o - ra, o - ra, o - ra pro

6 6 6/4 5 6/4 5 6 7 6/4

210

Vln. 1

Vln. 2

S

A

T

B

Org.

no - bis.
 no - bis.
 no - bis.
 no - bis.

no - bis.

4 # 6 # 6 7 #

Tùma - Litaniae Lauretanae

214

Vln. 1

Vln. 2

S

A

T

B

Org.

6# 6b 5 # 6 5 # 6 4 3

218

Vln. 1

Vln. 2

S

A

T

B

Org.

9 8 4 # b 6# 6 5 # 6# 6 6# 6 5 #

Tùma - Litaniae Lauretanae

221 Adagio

Vln. 1

Vln. 2

S
Sa - - lus in - fir - mo - - - - rum, re - fu - gi - um pec - ca - to -

A
Sa - lus in - fir - mo - - - - rum, re - fu - gi - um pec - ca - to -

T
Sa - lus in - fir - mo - - - - rum, re - fu - gi - um pec - ca - to -

B
Sa - lus in - fir - mo - - - - rum, re - fu - gi - um pec - ca - to -

Org.

221 Sa - lus in - fir - mo - - - - rum, re - fu - gi - um pec - ca - to -

$\sharp 4_2$ 7_4 6_4 $\natural 4$ 5_4 $6_{\flat 5}$ \flat $\flat 7_5$

Vln. 1

Vln. 2

S
rum, con - so - la - trix af - flic - to - rum, o - ra, o - ra, o - ra pro no -

A
rum, con - so - la - trix af - flic - to - rum, o - ra, o - ra pro no -

T
- - rum, con - so - la - trix af - flic - to - rum, o - ra, pro no - - - -

B
rum, con - so - la - trix af - flic - to - rum, o - ra pro no - - - -

Org.

226 rum, con - so - la - trix af - flic - to - rum, o - ra pro no - - - -

9_8 \sharp 6 $6_{\flat 5}$ \natural $\flat 7$ 5_4 6_4 5_4 \sharp

Tùma - Litaniae Lauretanae

231 **Vivace**

Vln. 1

Vln. 2

S
bis. Re - gi - na an - ge - lo - rum, o - ra pro - no - bis, re - gi - na pa - tri - ar - cha - rum, re - gi - na pro - phe -

A

T
bis.

B
bis.

Org.
bis.

6 6 7 ♯ 6 7 ♯ 6 7 ♯

235

Vln. 1

Vln. 2

S
ta - rum, o - - - - - ra, o - ra pro no - bis.

A

T

B

Org.

6♯ 6♯ 6♯ # 6 6 4 ♯

Tũma - Litaniae Lauretanae

239

Vln. 1

Vln. 2

S

A

T

B

Org.

6 6 5 6 5 6 4

242

Vln. 1

Vln. 2

S

A

T

B

Org.

Re - gi - na a - pos - to - lo - rum, o - ra, o - ra pro - no - - - -

Re - gi - na con - fes - so - rum, o - ra pro no -

5 6 # 6 4 3 6 b 7

Tũma - Litaniae Lauretanae

245

Vln. 1

Vln. 2

S

A

T

B

Org.

bis, o - ra pro no - - - - bis, pro no - bis.

bis, o - ra pro no - - - - bis, pro no - bis.

Re - gi - na mar-ty-rum, re -

Re - gi - na

6 7 6 5 9 6 5 9 3 6

249

Vln. 1

Vln. 2

S

A

T

B

Org.

gi - na con-fes - so - rum, o - ra, o - ra pro-no - - bis, re - gi - na vir - gi-num, o - ra pro

mar-ty-rum, re - gi - na con-fes - so-rum, o - ra pro-no - bis, re - gi - na vir - gi-num, o - ra pro

5 6# #

Tũma - Litaniae Lauretanae

253

Vln. 1

Vln. 2

S

A

T

B

no - bis, o-ra pro no - bis.

Org.

253 no - bis, o-ra pro no - bis.

6 #

257

Vln. 1

Vln. 2

S

A

T

B

Re - gi - na san-cto - rum om - ni - um, o - ra pro no - - - - bis, pro

Re - gi - na san-cto - rum om - ni - um, o - ra pro no - - - - bis, pro

Re - gi - na san-cto - rum om - ni - um, o - ra pro no - - bis, pro

Re - gi - na san-cto - rum om - ni - um, o - ra pro no - - bis, pro

Org.

257

7 6 # 7 6 7 #

Tùma - Litaniae Lauretanae

261

Vln. 1

Vln. 2

S

A

T

B

Org.

no - bis, ag-nus De - i, qui tol - lis pec-ca - ta mun - di, par-ce

no - bis, ag-nus De - i, qui tol - lis pec - ca - ta mun - di, par-ce

no - bis, ag-nus De - i, qui tol - lis pec - ca - ta mun - di, par-ce

no - bis, ag-nus De - i, qui tol - lis pec - ca - ta mun - di, par-ce

261 no - bis, ag-nus De - i, qui tol - lis pec - ca - ta mun - di, par-ce

4 # 6 7 6#

265

Vln. 1

Vln. 2

S

A

T

B

Org.

no - bis Do - mi - ne.

no - bis Do - mi - ne.

no - bis Do - mi - ne. Ag-nus De - i, qui - tol-lis pec-ca - ta mun - di ex - au - di nos,

no - bis Do - mi - ne.

265 no - bis Do - mi - ne.

6 4 3 4 7 6 5

Tũma - Litaniae Lauretanae

269

Vln. 1

Vln. 2

S

A

T

B

Org.

Ag - nus De - i, qui - tol - lis pec - ca - ta mun - di,

Ag - nus De - i, qui - tol - lis pec - ca - ta mun - di,

Do - mi - ne. Ag - nus De - i, qui - tol - lis pec - ca - ta mun - di,

Ag - nus De - i, qui - tol - lis pec - ca - ta mun - di,

6 5 7 6 #

272 Adagio

Vln. 1

Vln. 2

S

A

T

B

Org.

mi - se - re - re, mi - se - re - re no - bis, mi - se - re - re no - bis.

mi - se - re - re, mi - se - re - re no - bis, mi - se - re - re no - bis.

mi - se - re - re, mi - se - re - re no - bis, mi - se - re - re no - bis.

mi - se - re - re, mi - se - re - re no - bis, mi - se - re - re no - bis.

mi - se - re - re, mi - se - re - re no - bis, mi - se - re - re no - bis.

9 8 6 b5 # 6 4 4 #

Violino-1

LITANIAE LAURETANAE

František Tůma

1704 - 1774

Larghetto

5

10

15

20

30

35

40

46

52

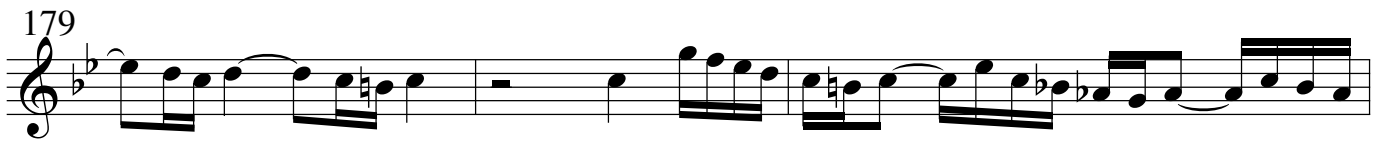
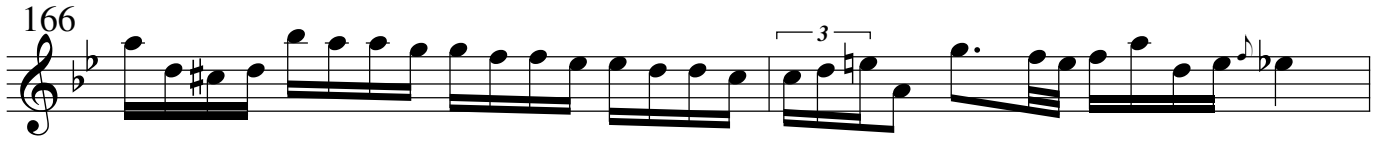
6

Tùma - Litaniae Lauretanae

Musical score for Tùma - Litaniae Lauretanae, measures 57-155. The score is written in a single system with ten staves. The key signature is B-flat major (two flats). The time signature is 4/4. The score includes various musical notations such as notes, rests, and ornaments. Measure numbers are indicated at the beginning of each staff: 57, 62, 78, 85, 93, 102, 107, 119, 127, 136, 146, and 155. Specific musical markings include a triplet of eighth notes with an 'tr' (trill) marking above it in measures 62 and 107, and various rests and ties. The piece concludes with a double bar line and a common time signature 'C' at the end of the final staff.

Affettuoso

Tũma - Litaniae Lauretanae

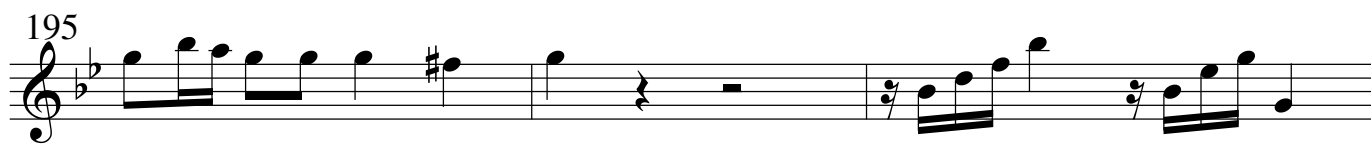


Tũma - Litaniae Lauretanae

193



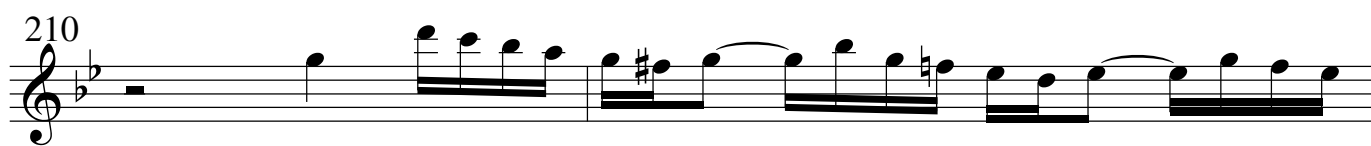
195



198



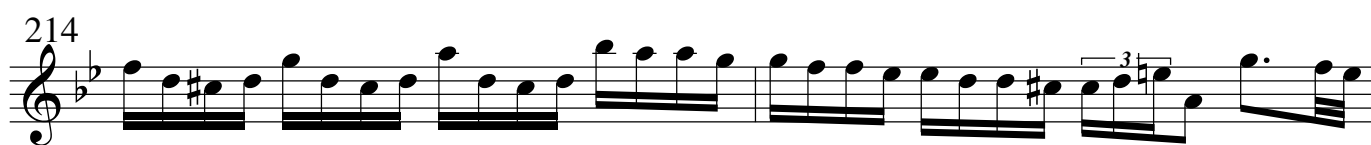
210



212



214



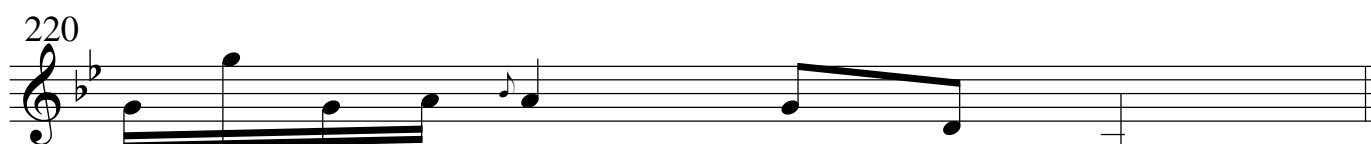
216



218



220



221 **Adagio**



226 **Vivace**



Tùma - Litaniae Lauretanae

232 5



239



241 11



254



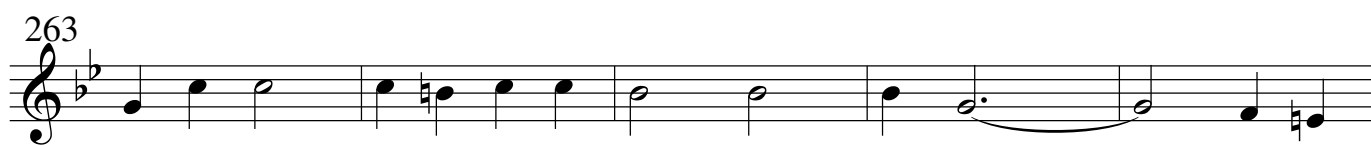
256



258



263



268



272 Adagio



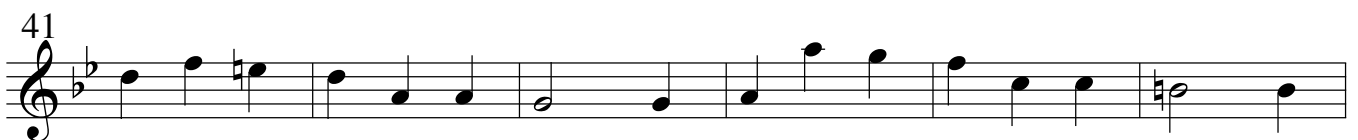
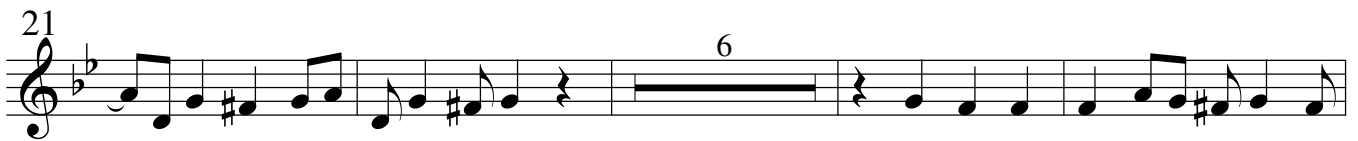
Violino-2

LITANIAE LAURETANAE

František Tůma

1704 - 1774

Larghetto



Tũma - Litaniae Lauretanae

Musical score for 'Tũma - Litaniae Lauretanae' in G minor, 3/4 time. The score consists of ten staves of music, each starting with a measure number. The key signature has two flats (Bb and Eb). The time signature is 3/4. The score includes various musical notations such as notes, rests, slurs, and fingerings. The final staff ends with a double bar line, a common time signature 'C', and the number '59'.

59

65

83

91

103

109

119

125

135

145

151

157

Affettuoso

59

221 Adagio



226



231 Vivace



239



241



254



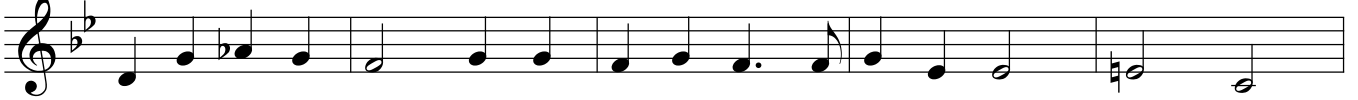
256



258



263



268



272 Adagio



Basso

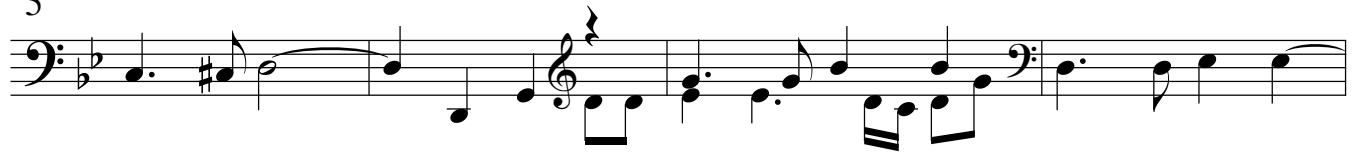
LITANIAE LAURETANAE

František Tůma
1704 - 1774

Larghetto



5



9



14



19



24



29

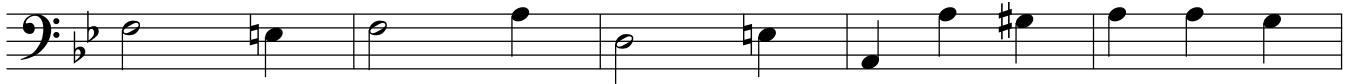


34





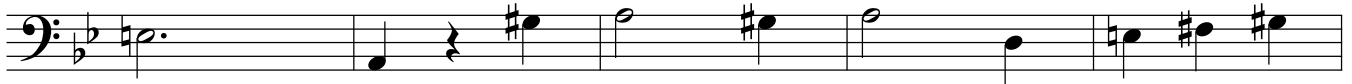
44



49



54



59



64



69



74



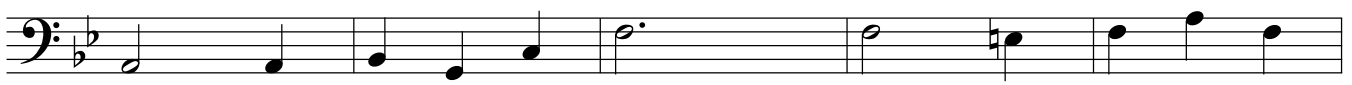
79



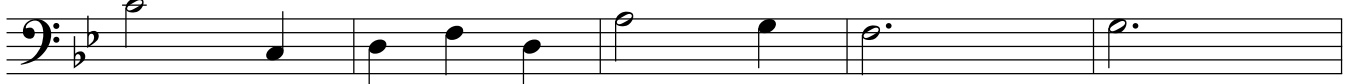
84



89



94



162 **Affettuoso**

Tùma - Litaniae Lauretanae



167



172



177



182



187



192



197



202



207



212



217



LITANIAE LAURETANAE

František Tůma
1704 - 1774

Larghetto

4 # 6 5 4 2 4 2 6

5

10 8 9 7 8 6 \flat 4 5 5 # 4 # 4 # 4 #

9

5 2 6 4 2 5 6 4 2 6 # 6 7 4 7 5 9 # 8 # 4 2

14

5 4 # 6 \flat 6 7 # 6 4 7 # 6 4 5 # 6 5 6 4 4 #

19

6 5 6 5 5 6 9 6 # 6 6 # 6 # 5 # 6

24

7 6 # 6 \flat 7 6 7 6 # 6 # 6 7 # 6 7 6 #

29

\flat 7 5 4 3 6 # 7 5 4 # 6 \flat 5 # 7 5 # 4 # 6 5

34

5 4 # 4 #2 4 2 6 #7 #5 5 4 #

6 \natural 5 5 \sharp 5 6 \flat \flat

44

6 6 \natural \sharp \flat

49

6 5 \flat 6 5 5 6 \natural 5

54

5 \flat \sharp 6 \natural 5 \sharp

59

\flat \sharp \flat \sharp \flat \sharp \flat \sharp \flat 6 \natural 5 \sharp

64

\flat \sharp \flat 6 \natural 5 \sharp \flat

69

6 5 6

74

4 5 \sharp

79

5 6 6 \flat 4 \flat 3 4 \flat 2 5 \flat 3 6 5

84

4 \flat 5 \flat 3

89

7 7 \flat 4 \flat 2 5 \flat 6 5

94

4 5 \flat \flat 4 5 \flat \sharp 5 6 \natural 5

162 Affettuoso

Tùma - Litaniae Lauretanae

Musical staff 162, bass clef, common time signature. The staff contains a sequence of eighth and sixteenth notes.

167

6 6 # 6 7 # 6# 6 5 6b #5

Musical staff 167, bass clef, common time signature. The staff contains a sequence of eighth and sixteenth notes.

172

6 6# 5# 4 3 9 8 5 4 #b 6# 6 5 6# 6 6#

Musical staff 172, bass clef, common time signature. The staff contains a sequence of eighth and sixteenth notes.

177

4 3 6 6 # 4 3 6 6 # 6

Musical staff 177, bass clef, common time signature. The staff contains a sequence of eighth and sixteenth notes.

182

4 # 9 9 9 9 6b 5 4 # 6 6 6b 5

Musical staff 182, bass clef, common time signature. The staff contains a sequence of eighth and sixteenth notes.

187

4 # b 5 6b 5 6 6 5 # 5 6b # #

Musical staff 187, bass clef, common time signature. The staff contains a sequence of eighth and sixteenth notes.

192

6 4 5 3 b b

Musical staff 192, bass clef, common time signature. The staff contains a sequence of eighth and sixteenth notes.

197

7 6 4 4

Musical staff 197, bass clef, common time signature. The staff contains a sequence of eighth and sixteenth notes.

202

Musical staff 202, bass clef, common time signature. The staff contains a sequence of eighth and sixteenth notes.

207

1 1 1 1 3 8 5 6 6# 6 6 6 5 #

Musical staff 207, bass clef, common time signature. The staff contains a sequence of eighth and sixteenth notes.

212

6 4 # 5 6 7 6 4 4 # 6

Musical staff 212, bass clef, common time signature. The staff contains a sequence of eighth and sixteenth notes.

217

6 7 # 6# 6b 5 # 6 5 # 6

Musical staff 217, bass clef, common time signature. The staff contains a sequence of eighth and sixteenth notes.

4 3 9 8 4 # b 6# 6 5 # 6# 6 6# 6 5 #

Cornetto
(optional)

LITANIAE LAURETANAE

František Tůma
1704 - 1774

Affettuoso

6

11

16

29

33

43

51

120

127

136

6

9

6

2

63

3

Tũma - Litaniae Lauretanae

144

150

156

162

37

202

207

10

221 Adagio

226

231 Vivace

25

261

266

2

272 Adagio

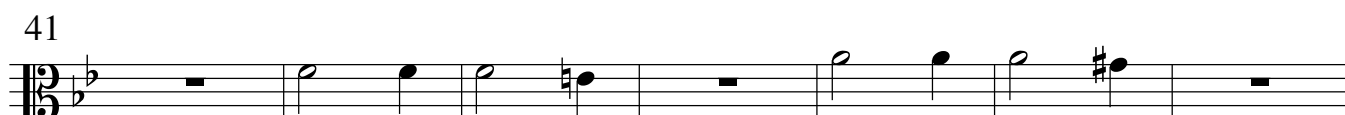
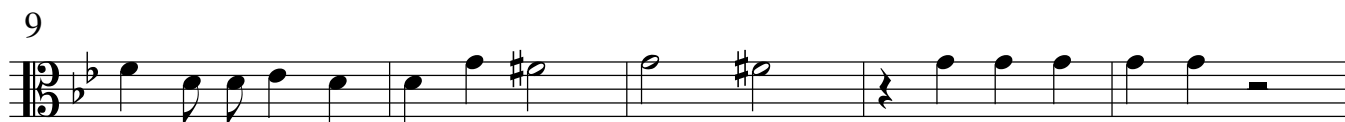
Alto trombone
(optional)

LITANIAE LAURETANAE

František Tůma

1704 - 1774

Adagio



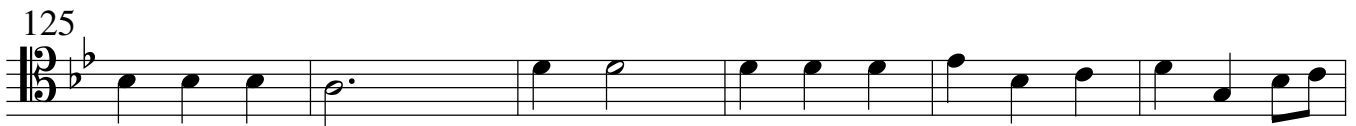
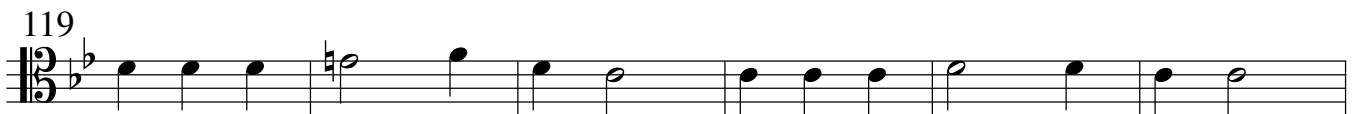
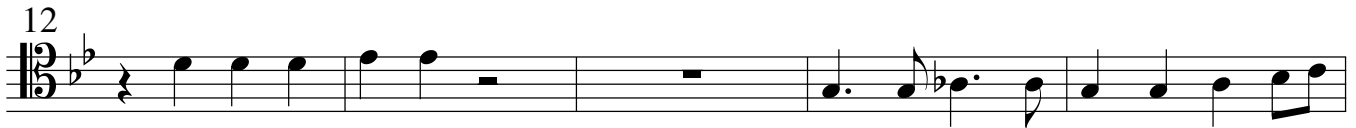
Tenor trombone
(optional)

LITANIAE LAURETANAE

František Tůma

1704 - 1774

Larghetto



Tũma - Litaniae Lauretanae

144

153

162 **Affettuoso**

202

206

211 **Adagio**

225

229 **Vivace**

258

262

267

272 **Adagio**

Basso Trombone
(optional)

LITANIAE LAURETANAE

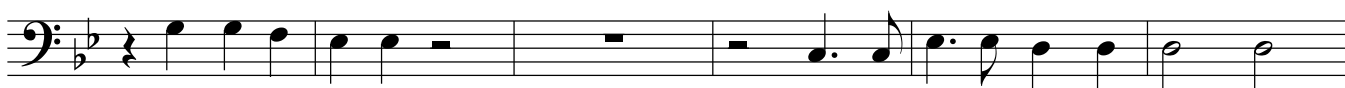
František Tůma

1704 - 1774

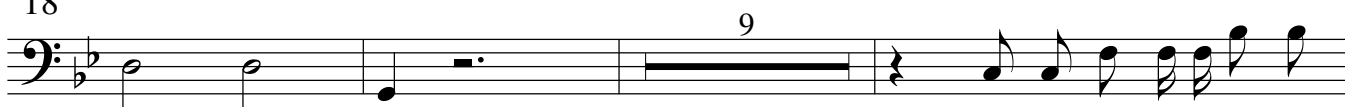
Larghetto



12



18



30



39



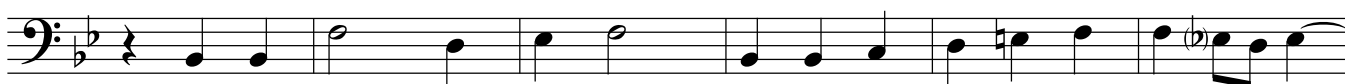
45



51



110



116



123

